

Operating and Maintenance Manual

Worm Gear Winch



This manual MUST be kept with the winch at all times. New winch operators MUST read and understand the contents fully.

WARNING

FAILURE TO HEED THE FOLLOWING WARNINGS MAY RESULT IN SERIOUS INJURY OR DEATH!

- **Do not use to lift or move people. If your task involves moving or lifting people, you must use the proper equipment, not this winch.**
- **Winch operators must be trained in the proper, safe operation of the winch.**
- **Cable anchors on Tulsa Winches are not designed to hold the rated load of the winch. You must keep at least five (5) wraps of cable on the drum to insure that the cable doesn't come loose.**
- **Stay clear of suspended loads and of cable under tension. A broken cable or dropped load can cause serious injury or death.**
- **Make sure that all equipment, including the winch and cable, is maintained properly. Pay especially close attention to the clutch, making sure that it fully engages when shifted. Do not attempt to disengage the clutch when a load is on the winch.**
- **Winches not equipped with automatic worm brakes should never be used to lift loads.**
- **Avoid shock loads. This type of load imposes a strain on the winch many times the actual weight of the load and can cause failure of the cable or of the winch.**

INTRODUCTION

Thank you for purchasing a new Tulsa Winch. We are proud of our products and are certain that they will perform your winch tasks properly. However, we do ask that you take a few minutes to read and thoroughly understand this booklet. Also, if you have new operators assigned to the winch, make sure that they read and understand it. Because of the large number of models we manufacture, we are unable to show parts lists for every model in this booklet. If you want or need parts lists, please write Tulsa Winch, 11135 S. James, Jenks, OK 74037. Or call (918) 298-8300 or fax us at (918) 298-8367. You may also go to our Web site at www.team-twg.com.

TABLE OF CONTENTS

General Operation	2
Break-In/Operation	3
Using A Snatch Block	4
Cable Considerations	5
The Importance Of A Proper Fleet Angle	6
Winch Mounting	7
General Maintenance & Lubrication	9
Automatic Worm Brakes	11
Model Codes	15 & 16
Warranty	Back

GENERAL OPERATION

1. Be sure to read all safety instructions thoroughly. It is important that each operator is aware of the consequences of misuse or poor operating practices of this winch.
2. Tulsa Winch products are not to be used to lift, hoist, or move people. If your application requires moving persons, you must use the proper equipment for the task.
3. Cable anchors on Tulsa Winch products are not designed to hold the rated load of the winch. You must keep at least five (5) wraps of cable on the drum to insure that the cable does not come loose.
4. Personnel must stay clear of a suspended load or any line under load. A distance of 1-1/2 times the length of the cable should be maintained while the cable is under tension. Failure to heed this warning may result in serious injury or death.
5. Make sure that all equipment is maintained properly and regular systems checks are performed to insure your winch is working safely. Refer to the maintenance section of this manual for details on these procedures.
6. Avoid shock loads. This type of load imposes a strain on the winch many times the actual weight of the load and can cause failure of the cable or of the winch.
7. Always inspect cable before beginning job. Never allow cable to slide through hands while maintaining tension, use hand-over-hand method to keep cable tension while spooling. Always use leather gloves when handling cable.

WINCH BREAK-IN

Winches, like any other kind of machinery, require a “break-in” to perform well and to maximize their life. The following guidelines should be used in the break-in of Tulsa Winches.

Use extreme care when first spooling cable onto the winch. DO NOT run the winch at high speeds when performing this operation. Make sure that the cable is unrolled in a line (to prevent kinks) and SLOWLY inhaul the winch to install the cable.

DO NOT exceed one half rated load or one half rated linespeed for the first thirty minutes of operation. This will insure that the worm and gear have an opportunity to wear in properly. Periodically, check the gearbox for temperature rises and allow the winch to cool down between pulls. Worm gear winches are designed and intended for intermittent duty application only; using them in extremely long pulls may generate excessive heat and shorten the life of the winch.

WINCH OPERATION

To familiarize yourself with the winch, run it for a few minutes to understand the controls and the “feel” of the winch. Pay particular attention to the controls and how they operate. If the winch has air controls on the brake or clutch, or both, operate them to see how they work and the direction of activation of the controls. If the winch is hydraulically powered, make sure you understand which way the winch will rotate when the control lever is moved.

Always make sure that all people are clear of the load and of the cable area before beginning a winching operation. A broken cable can fly in any direction.

If you are using a mechanically powered winch, learn to pay close attention to the truck engine to sense possible overload. If using a hydraulic winch, do not attempt to defeat the relief valve. If you have any doubts about the capability of the winch to lift or move a load, either put a “snatch block” in the line or get a bigger piece of equipment.

WINCH OPERATION (Continued)

The typical winch operating cycle consists of the following steps:

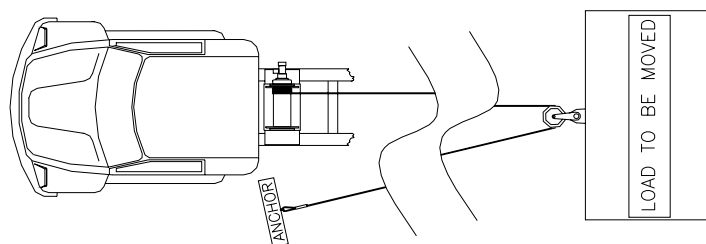
1. Disengaging the winch drum clutch and pulling off enough cable to allow hooking the load. If the winch is equipped with a manually operated drum rake, use it to keep the cable from “birds nesting” while being pulled off. DO NOT get into the habit of powering off cable; all this does is shorten the life of the winch, especially the winch brake.

Note: The drum brake is for free-spooling cable only. It is not intended to be a load-holding brake and must not be used as such.

2. After hooking to the load, engage the drum clutch and release the drum brake, if the winch is so equipped. Make sure the clutch is fully engaged.
3. Begin winching the load slowly, watching carefully to insure that the load is moving normally and that no one is in the immediate area of the load or of the cable
4. When the load is positioned where you want it, stop the winch. If the load is suspended, the automatic worm brake will hold it until you are ready to lower it.

USING A SNATCH BLOCK

By using a snatch block you have effectively cut the load on the winch in half. A snatch block should be used any time you have a concern about the ability of the winch or cable to move a load. The following illustration shows one way to rig such a block.



CABLE CONSIDERATIONS

As the number of layers of cable on a winch increases, the rated capacity of the winch goes down. If you are operating at near the top of the drum flanges, the effective rating of the winch is about half of what it is on the first layer. You should therefore, only keep as much cable on the winch as you need for your job.

Never use larger or smaller cable on your winch than is recommended for it. The use of larger cable will not allow you to pull larger loads and may, in fact, break easier than the proper size cable. The use of smaller cable may overheat the winch due to increased running time with more cable.

The following chart shows the recommended cable sizes for Tulsa Winches:

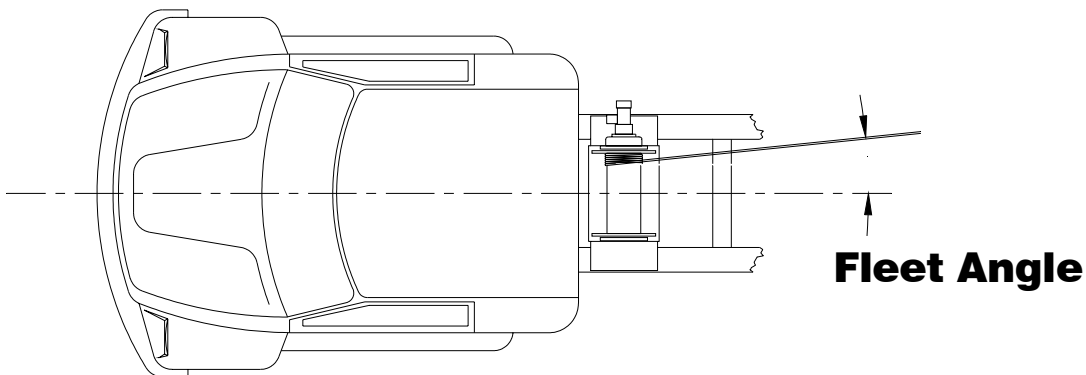
Winch Model	Cable Size
938	7/16"
1138 or RN10W	7/16"
1000	7/16"
1200	1/2"
10 or RN15W	1/2"
12	1/2"
18	5/8"
18G	5/8"
19	5/8"
23 or RN20W	5/8"
24	3/4"
34 or RN30W	3/4"
64 or RN45W	7/8"
70 or RN65W	1"
75	1"
80 or RN100W	1"

Consult your local cable supplier for recommendation on the best type of cable and hardware to use in your specific application.

WARNING: CABLE ANCHORS ON TULSA WINCHES ARE NOT DESIGNED TO HOLD THE RATED LOAD OF THE WINCH. YOU MUST KEEP AT LEAST 5 WRAPS OF CABLE ON THE DRUM TO INSURE THAT THE CABLE DOES NOT COME LOOSE.

THE IMPORTANCE OF A PROPER FLEET ANGLE

Maintaining the proper fleet angle is important to the success of your winching operation, the life of your winch and the life of the cable you are using. The fleet angle can best be described by the following illustration.



The fleet angle should be kept as small as possible to insure proper spooling and to maximize cable and winch life. To promote even cable spooling, keep the fleet angle below three degrees. Whenever possible, spool through a block at the back of the truck body. Never pull directly against the flange of the winch cable drum as this may cause the cable or the winch to break.

If you are using a front mounted winch for vehicle recovery, use a snatch block to avoid pulling sideways on the winch. If your winch is equipped with a four way roller and you absolutely must pull against a side roller, do so only for as long as is necessary and carefully watch the cable on the drum. It will pile up on one side of the drum and you must insure that it doesn't jump over the drum flange. When you are finished using the winch in a manner where the cable does not spool evenly, disengage the clutch and pay out the uneven cable. Then slowly re-spool the cable, making sure that it lays evenly.

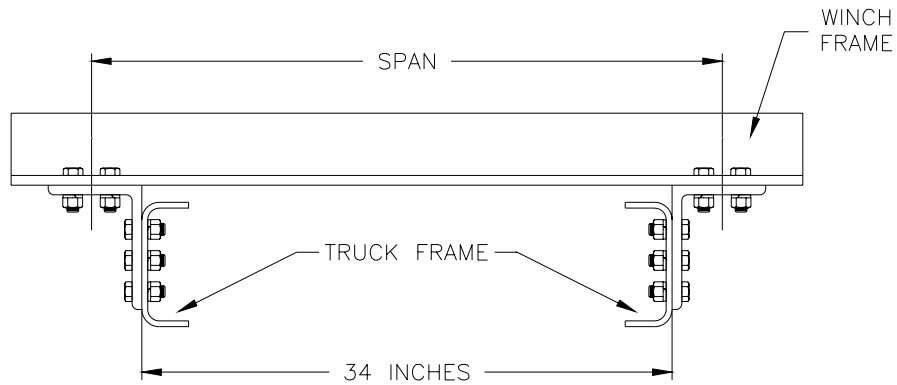
WINCH MOUNTING

You must make sure that your winch is securely mounted in order for it to function properly and to insure safe operation. The mount must be flat to insure proper alignment between the gearbox side, the drum, and the clutch.

A rule of thumb to use when selecting capscrews to mount the winch is to use the same size and number of capscrews to fasten the winch to its mount as we use to fasten the gearbox and end bracket to the winch frames. Winches must never be fastened directly to the frame of a truck; mounting brackets as shown below should be used. The mounting span of the winch is very important; you should make sure that the mounting span is as close to the values shown in the chart below as possible.

All capscrews used to mount the winch should be Grade 8 or better and should be carefully tightened to the proper torque value for their size. All moving parts used to drive mechanical winches should be secure and guards used, if they are in accessible locations. If the winch being mounted is hydraulically driven, make sure the system is clean and that all components function properly, especially the relief valve.

WINCH MOUNTING (Continued)



Model	Max. Span (Inches)	No. of Capscrews	Size Capscrews
938	22	8	1/2"
1138 or RN10W	27	8	1/2"
1000	25	8	1/2"
1200	25	8	1/2"
10 or RN15W	26	8	3/4"
12	27	8	3/4"
18	34	8	3/4"
18G	32	8	3/4"
19	31	8	3/4"
23 or RN20W	31	8	3/4"
24	30	8	1"
34 or RN30W	35	8	1"
64 or RN45W	40	8 or 12	1 1/8" 1"
70 or RN65W	34	8 or 16	1 3/8" 1"
80 or RN100W	44	8 or 16	1 3/4" 1 1/4"

WINCH MAINTENANCE

A winch, like any other type of machinery, needs to have regular maintenance if it is to perform properly, give lasting value, and provide safe winching. Good maintenance consists of two parts, a daily inspection and a periodic servicing.

DAILY

Each day, or after one hour of winch use, the following items should be inspected and adjusted, if necessary:

1. If the winch is mechanically driven, check all drive components for alignment and tight mounting. If it is hydraulically driven, check for leaks and the proper fluid level in the hydraulic reservoir.
2. Check the cable for excessive wear, for broken strands, and lubrication.
3. Check the automatic worm brake for proper adjustment and adjust it if necessary.
4. Check the drum clutch to make sure it is fully engaging when shifted in. Make adjustments if necessary.

Weekly

Once a week, or every 10 hours of operation, the following tasks should be performed for proper maintenance of your winch.

1. Lube all bushings which are equipped with grease zerks with a good quality lithium-based chassis lube.
2. Inspect the oil level in the winch gearbox and add lubricant if necessary.
3. Lubricate the cable based on your wire rope supplier's recommendations.
4. If the winch is equipped with a shoe-type brake, inspect the shoes and drum for wear and replace if necessary.

WINCH MAINTENANCE (Continued)

BI-ANNUALLY

Every six months, the gearbox should be drained and filled with new, clean gear lubricant. All Tulsa worm gear winches are filled at the factory with EP140 gear lube, which is ideal for most working conditions. If the ambient temperatures where your winch will be working will not exceed 30 degrees F., you can use EP90; likewise, if the temperature will always be over 100 degrees F., you probably should use EP250.

The following chart shows the oil capacities for Tulsa Winches:

Winch Model	Oil Capacities (pints)
938	1 1/2
1138 or RN10W	1 1/2
1000	2
1200	2
10 or RN15W	3
12	3
18	6
18G	6
19	6
23 or RN20W	6
24	6
34 or RN30W	6
64 or RN45W	10
70 or RN65W	10
75	10
80 or RN100W	15

Some Tulsa winches may have been modified to be mounted in other than the normal attitude, which is with the worm horizontal and below the level of the output shaft. If your winch is mounted in another attitude, there may be a special plug which determined the oil level required in your winch. If you have any questions, please contact the factory.

AUTOMATIC WORM BRAKES

Most Tulsa winches are equipped with an automatic worm brake to hold suspended loads. If your winch is not equipped with one, it is intended for pulling loads only. If you wish to lift and suspend loads with your winch, it can be retrofitted with an automatic worm brake. Please consult the factory for details.

The worm brake is an important safety feature of your winch and must be maintained properly. There are two types of worm brakes used on Tulsa Winches:

1. Automotive-style shoe brakes.
2. Multiple-disc wet brakes.

Each of these worm brakes is designed to operate in the same manner. As a load is hauled in, the brake is released and the load is moved or raised. As the load is stopped, the brake engages and prevents it from falling. When the operator begins to pay out cable to lower the load, he must overcome the drag of the brake to lower the load.

In order for the brake to operate properly, it must be set to engage in the payout mode. To check this, run the winch for one minute under no load in both directions at low speeds. If there is evidence of heat build-up in the payout direction, the brake is installed properly. If the heat rise occurs in the inhaul direction, the brake is installed backward and must be changed.

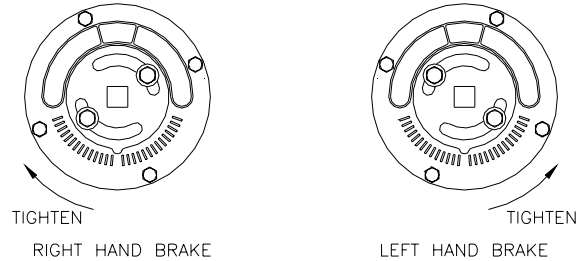
Most winches are set up to spool over the drum to the load. You can check your model code to determine this. If the winch is set up in this manner and you decide to spool the cable under the drum, you must reverse the direction of brake engagement.

The most common brake for Tulsa winches is the automotive-style shoe brake. This brake uses two shoes in a brake drum to hold winch loads. Models 10 through 34 with shoe brakes have a reversible cam; the 64, 70, and 80 require installation of a new cam to change the direction of braking.

AUTOMATIC WORM BRAKES (Continued)

The following illustration shows the end cover of the typical shoe brake and how to adjust it.

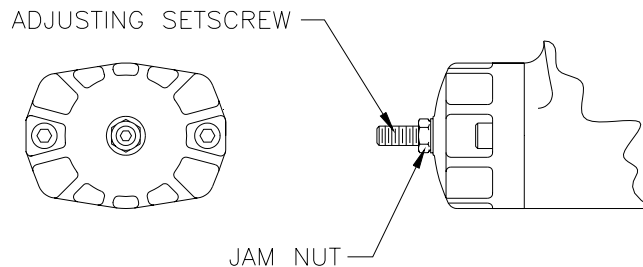
ADJUSTABLE SHOE BRAKE



To tighten the brake, loosen the two capscrews in the slotted holes and rotate the brake in the direction shown. If the brake on a Model 10 through 34 needs to be reversed, remove those same two capscrews, rotate the cam 60 degrees in the loosening direction, and reinstall the capscrews in the new set of holes which have just been revealed. After adjustment, be sure to re-tighten the cam capscrews securely.

The Models 938, 1138, 1060, 1242, RN10W and 1754 are equipped with an adjustable, multiple disc oil brake.

ADJUSTABLE MULTIPLE DISC OIL BRAKE



This brake is adjusted by loosening the jam nut and turning the setscrew inward.

AUTOMATIC WORM BRAKES (Continued)

Some versions of the Models 10 through 80 are equipped with a non-adjustable multiple disc oil brake. These winches can be identified by the warning on the cover.

NON-ADJUSTABLE MULTIPLE DISC OIL BRAKE

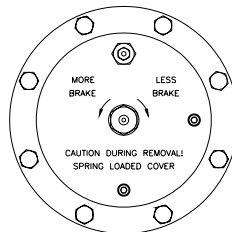


**CAUTION DURING REMOVAL!
SPRING LOADED COVER!**

These brakes require no regular adjustment. The direction of braking for all multiple disc brakes can be changed by removing the cam clutch, turning it over, and re-installing it. For detailed service instructions, contact your Tulsa Winch distributor or the factory.

Some versions of the Models 10 through 80 are equipped with an adjustable multiple disc oil brake. These winches can be identified by the hex adjuster located in the center of cover.

ADJUSTABLE MULTIPLE DISC OIL BRAKE



This style of brake can be adjusted by turning hex adjuster counter-clockwise to increase brake and clockwise to decrease brake. The direction of braking for all multiple disc brakes can be changed by removing the cam clutch, turning it over, and re-installing it. For detailed service instructions, contact your Tulsa Winch distributor or the factory.

BRAKE ADJUSTMENT

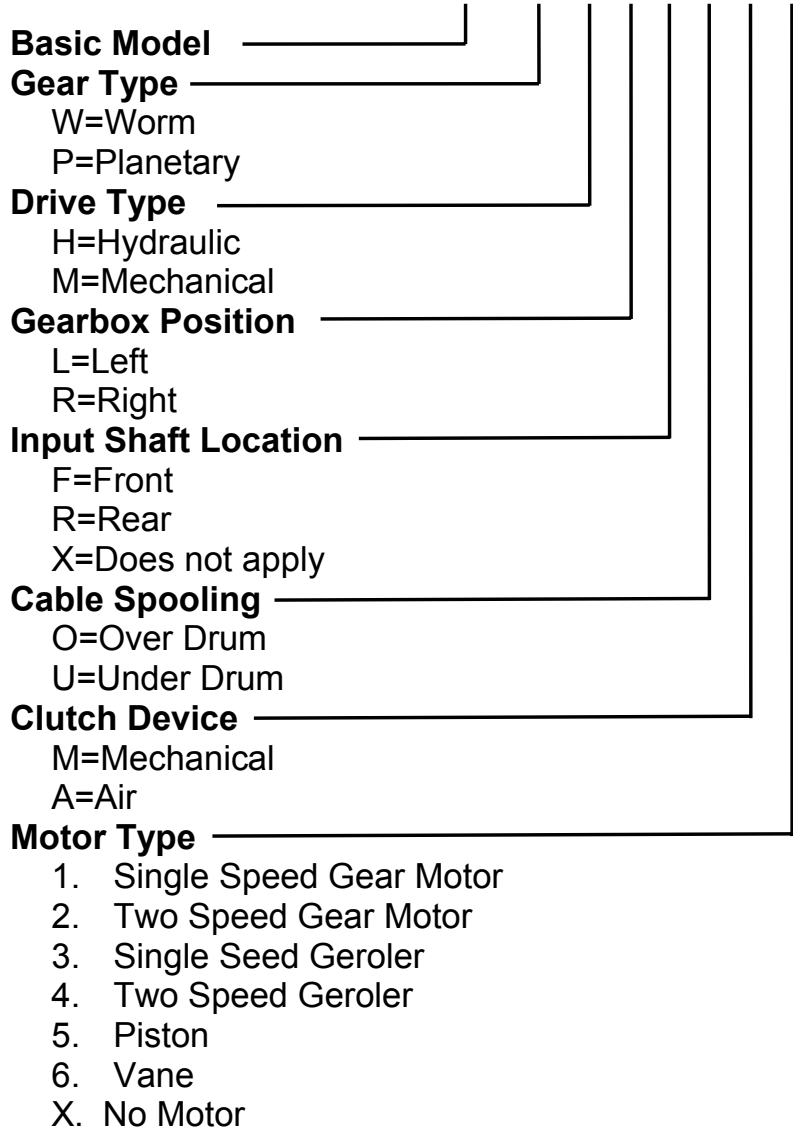
In general, worm brakes on Tulsa winches should only be adjusted enough to hold the load you are currently working with. Over adjustment will result in excessive heat generation and brake wear. The most positive way to insure proper brake adjustment is to lift a test load just barely off the ground, jog the winch out, and see if the brake holds. If it doesn't, tighten the brake slightly and try it again. If the brake is tightened completely and the load still drifts, the brake must be serviced. DO NOT use the winch to lift loads with a worn brake.

If the input to the winch is accessible and a torque wrench can be put on it, the brake can set with this torque wrench. The following table shows the torque values for all models based on rated linepull.

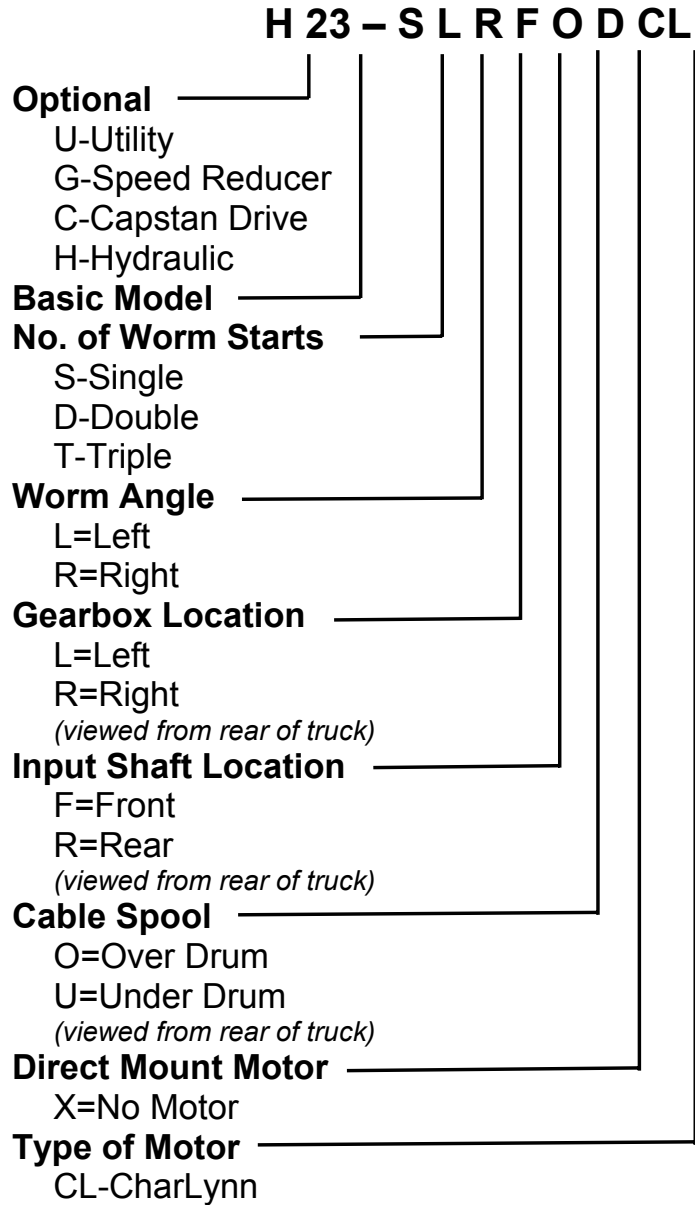
Winch Model	Brake Torque (Lb./Ft.)
938	3
1138 or RN10W	3
1000	3
1200	4
10 or RN15W	32
12	32
18	50
18G	50
19	50
23 or RN20W	50
24	70
34	70
64	120
70	140
75	140
80	185

WINCH MODEL CODES

RN100 W M L F O M X

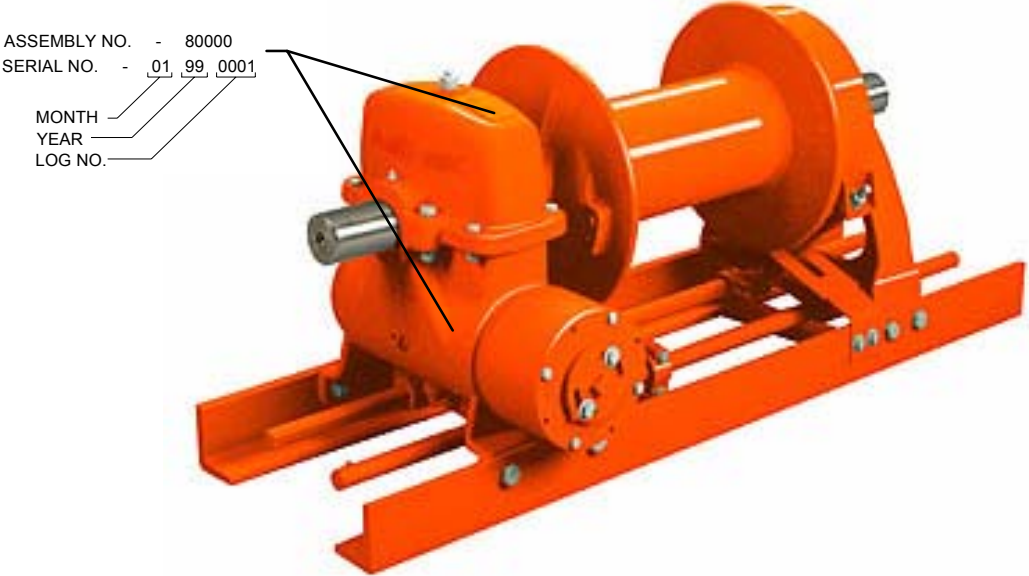


WINCH MODEL CODES



ALL Tulsa Winches have the serial number, and assembly number stamped both on the identification tag and on the housing. Please take a few minutes to record these numbers for future use. The assembly number will be required when ordering parts.

MODEL: _____
SERIAL NO: _____
ASSEMBLY NO: _____



Quick reference for parts information:
11135 S. James
Jenks, OK 74037
Voice: (918) 298-8300
Fax: (918) 298-8301
www.team-twg.com

Tulsa Winch Limited Warranty

Effective 8/1/2008
SUPERSEDES ALL PRIOR WARRANTIES

Seller warrants that each article (whether Gear Drive Products, Brake Products and/or Winch Products, all of which are covered hereunder) sold under this order shall at the time of shipment (i) conform to applicable specifications, and (ii) be free from defects in material and workmanship during normal and ordinary use and service (the "Warranty").

Buyer's exclusive remedy and Seller's sole obligation under this Warranty shall be, at Seller's option, to repair or replace any article or part thereof which has proven to be defective, or to refund the purchase price of such article or part thereof. Buyer acknowledges that Buyer is knowledgeable concerning the articles covered by this Warranty and sold in connection therewith which are being purchased, that Buyer has reviewed this Warranty and that the remedies provided hereunder are adequate and acceptable to Buyer.

This Warranty shall expire one (1) year from the date the article is first shipped by Seller. Notice of claimed breach of this Warranty must be given by Buyer to Seller within the applicable period. Such notice shall include an explanation of the claimed warranty defect and proof of date of purchase of the article or part thereof for which warranty coverage is sought. No allowances shall be made by Seller for any transportation, labor charges, parts, "in and out" costs, adjustments or repairs, or any other work, unless such items are authorized in writing and in advance by Seller. Nor shall Seller have any obligation to repair or replace items which by their nature are expendable.

If an article is claimed to be defective in material or workmanship, or not to conform to the applicable specifications, Seller will either examine the article at Buyer's site or issue shipping instructions for return to Seller. This Warranty shall not extend to any articles or parts thereof which have been installed, used, or serviced otherwise than in conformity with Seller's applicable specifications, manuals, bulletins, or instructions, or which shall have been subjected to improper installation, operation, or usage, misapplication, neglect, incorrect installation, overloading, or employment for other than normal and ordinary use and service. This Warranty shall not apply to any article which has been repaired, altered or disassembled, or assembled by personnel other than those of Seller. This Warranty shall not apply to any article upon which repairs or alterations have been made (unless authorized in writing and in advance by Seller). This Warranty shall not apply to any articles or parts thereof furnished by Seller to Buyer's specifications and/or furnished by Buyer or acquired from others at Buyer's request.

SELLER MAKES NO EXPRESS WARRANTIES AND NO IMPLIED WARRANTIES OF ANY KIND, OTHER THAN THE WARRANTY EXPRESSLY SET FORTH ABOVE. SUCH WARRANTY IS EXCLUSIVE AND IS MADE AND ACCEPTED IN LIEU OF ANY AND ALL OTHER WARRANTIES, EXPRESS OR IMPLIED, INCLUDING WITHOUT LIMITATION THE IMPLIED WARRANTIES OF MERCHANTABILITY AND FITNESS FOR A PARTICULAR PURPOSE.

Buyer expressly agrees that Seller is not responsible to perform any work or investigation related in any way to torsional vibration issues and is not responsible for the detection or remedy of Natural Frequency Vibration of the mechanical system in which the unit is installed. Buyer acknowledges, understands and agrees that this Warranty does not cover failures of the unit which result in any manner from the operation of the machine or unit at vibration frequencies at or near the natural frequency vibration of the machine in such a way that damage may result. Buyer expressly agrees that Seller is not responsible for failure damage or accelerated wear caused by machine or ambient vibration. Further, Buyer acknowledges and agrees that Buyer is always solely responsible for determination and final approval of the "application factor" which may be used in Seller's calculations, and this application factor is 1.0 unless otherwise stated in Seller's quotation specifications.

The remedies for this Warranty shall be only those expressly set forth above, to the exclusion of any and all other remedies of whatsoever kind. The limited remedies set forth above shall be deemed exclusive, even though they may fail their essential purpose. No agreement varying or extending the foregoing Warranty, remedies, exclusions, or limitations shall be effective unless in a writing signed by an executive officer of Seller and Buyer. This Warranty is non-transferable. If a party who had purchased articles from Buyer, or from persons in privity with Buyer, brings any action or proceeding against Seller for remedies other than those set forth in this Warranty, Buyer agrees to defend Seller against the claims asserted in such action or proceeding at Buyer's expense, including the payment of attorneys' fees and costs, and indemnify Seller and hold Seller harmless of, from and against all such claims, actions, proceedings or judgments therein. Buyer also agrees to defend and indemnify Seller of, from and against any loss, cost, damage, claim, debt or expenses, including attorneys' fees, resulting from any claims by Buyer or third parties to property or injury to persons resulting from faulty installation, repair or modification of the article and misuse or negligent operation or use of the article, whether or not such damage to property or injury to persons may be caused by defective material, workmanship, or construction. **ADVISORY:** *Winches and hoists are not approved for lifting or handling personnel or persons unless specifically approved in writing from Seller for the specific intended application.*

Under no circumstances shall Seller be liable (i) for any damage or loss to any property other than the warranted article or part thereof, or (ii) for any special, indirect, incidental, or consequential damage or loss, even though such expenses, damages, or losses may be foreseeable.

The foregoing limitations on Seller's liability in the event of breach of warranty shall also be the absolute limit of Seller's liability in the event of Seller's negligence in manufacture, installation, or otherwise, with regard to the articles covered by this Warranty, and at the expiration of the Warranty period as above stated, all such liabilities shall terminate. Buyer's purchase of any article(s) covered by this Warranty shall constitute acceptance of the terms and conditions hereof and shall be binding upon Buyer and Buyer's representatives, heirs and assigns. The laws of the State of Oklahoma shall govern Buyer's rights and responsibilities in regard to this Warranty and the transaction(s) subject thereto, and the State of Oklahoma shall be the exclusive forum and jurisdiction for any action or proceedings brought by Buyer in connection herewith or any dispute hereunder. If any of the terms and conditions contained within this Warranty are void, the remaining provisions thereof are and shall remain valid and enforceable.

Note: *Prices and specifications contained in this price book are subject to change without notice.*