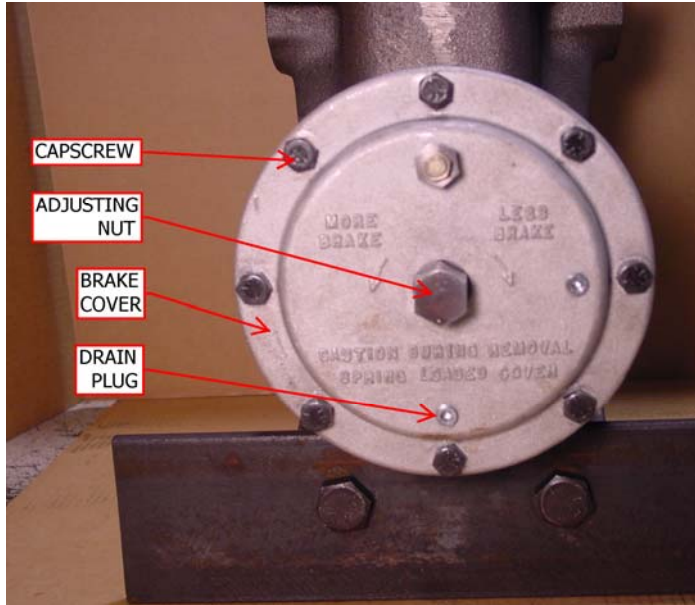


Inspection Notice

08-10000-0

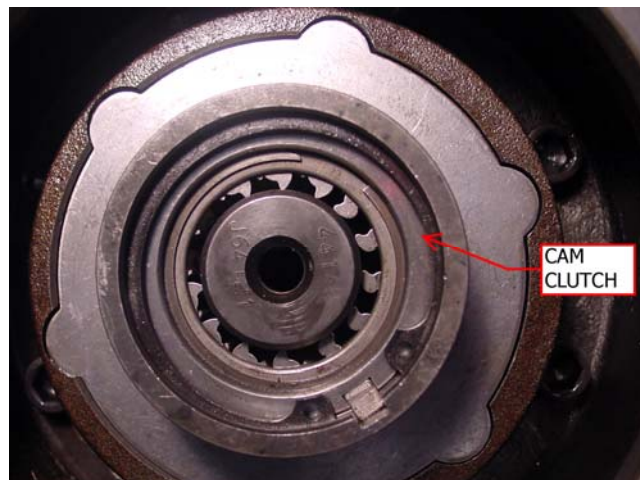
RUFNEK RN30W BRAKE CAM CLUTCH INSPECTION



1. Remove the drain plug to drain the oil from the brake.
2. Loosen the spring tension inside the brake by rotating the adjusting nut clockwise until it stops.

CAUTION: Extreme care should be taken when removing the brake cover. The cover is spring loaded against the cover screws.

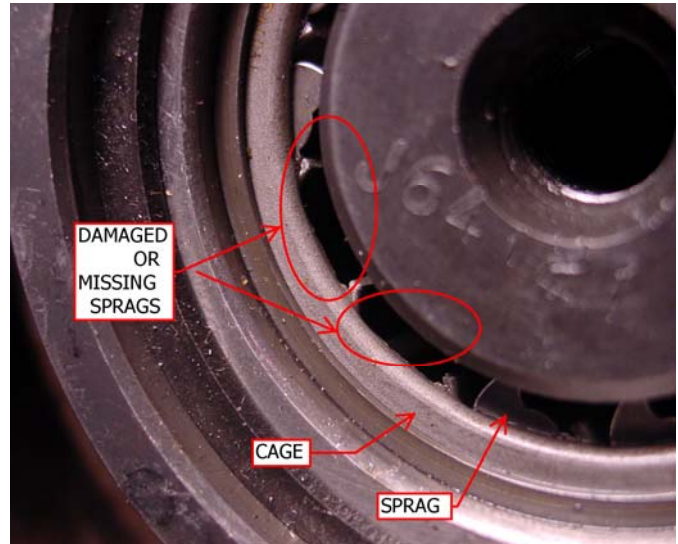
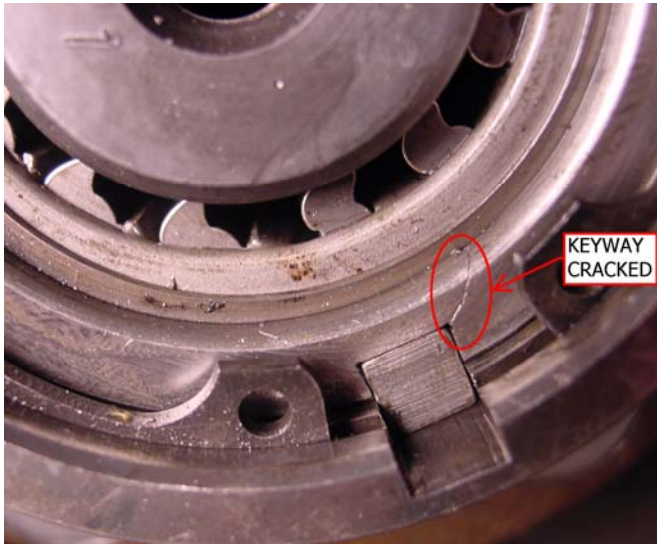
3. Evenly remove the capscrews from the brake cover, remove the brake cover and spring to expose the cam clutch.



Inspection Notice

08-10000-0

4. Inspect the cam clutch for damage



5. Inspect the keyway in the cam clutch for signs of cracking as shown above.
6. Inspect for missing or damaged sprags as shown above, and for damage to the cage.
7. Contact your distributor if there are any signs of damage for replacement parts.