



Tulsa Winch

CLUTCH POSITION INDICATOR ADJUSTMENT

MAKE SURE DRUM CLUTCH (ITEM 1) IS FULLY ENGAGED & THAT THE YOKE (ITEM 2) IS NOT BINDING ON THE DRUM CLUTCH. THE LUGS OF THE YOKE MUST BE CENTERED IN GROOVE WITH CLUTCH FULLY ENGAGED FOR THE CLUTCH POSITION INDICATOR TO BE ADJUSTED PROPERLY (SEE FIG.-2).

THE SWITCH (ITEM 3) IS A NORMALLY OPEN SWITCH THAT IS ACTUATED BY DISENGAGING THE CLUTCH WHICH CLOSSES THE CIRCUIT.

WITH THE CLUTCH FULLY ENGAGED, ADJUST SWITCH IN UNTIL THE WARNING DEVICE IS ACTIVATED, THEN BACK-OUT 1/4 TURN TO DEACTIVATE THE WARNING DEVICE.

TIGHTEN JAM NUT (ITEM 4) AGAINST CLUTCH BRACKET TO SECURE ADJUSTMENT.

TEST SWITCH ADJUSTMENT BY FULLY ENGAGING THE CLUTCH, THEN FULLY DISENGAGING THE CLUTCH. THE WARNING DEVICE SHOULD ACTIVATE WHILE DISENGAGING THE CLUTCH PIVOTING NO MORE THAN 3°.

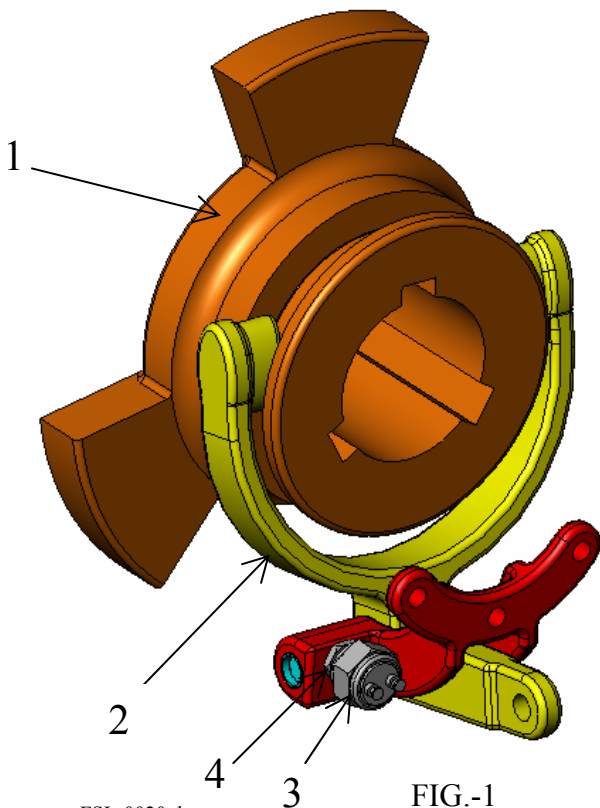


FIG.-1

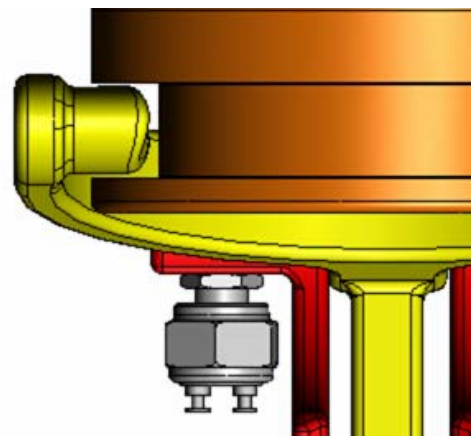


FIG.-2