

# Safety Innovation to Help You Work Smarter

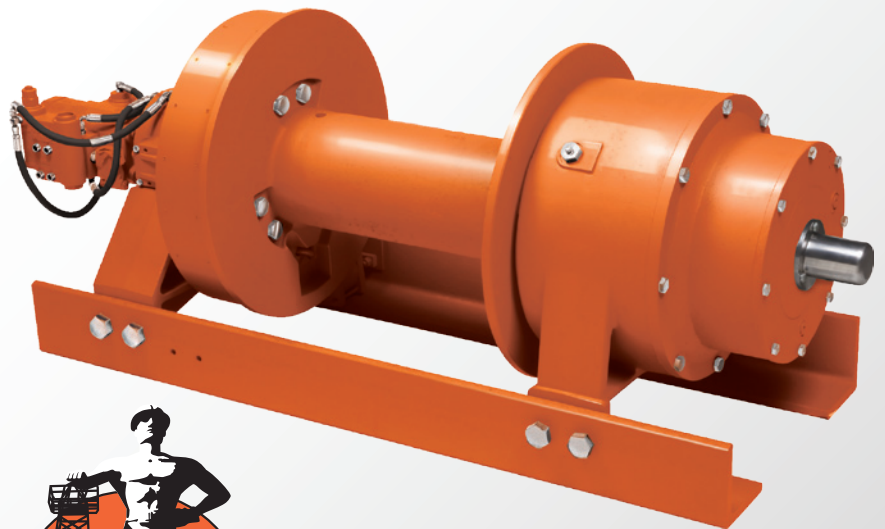


At Tulsa Winch®, we take performance and innovation seriously—and it shows. Our hydraulic winches, hoists and swing drives are engineered to deliver the extra long life you expect, with the advanced features you need to get the job done safely.

Tulsa Winch offers a full complement of gearing products for large oilfield trucks, heavy haul tractor packages, digger derricks, cranes and aerial work platforms for the energy and infrastructure markets. Our Rufnek® with Intelliguard™ planetary winches are designed with the industry's latest data-capturing technology to communicate real-time information during equipment operation—so operators work safer, smarter, and more efficiently than ever.

Finally, safety innovation meets superior product performance.

It's time you put Tulsa Winch to work.



**RUFNEK®**  
with Intelliguard™



Infrastructure | Energy | Recovery

[www.team-twg.com](http://www.team-twg.com)

TWG is a global leader in standard and engineered winch, gearbox and electronic monitoring systems.

LANTEC:  
sales@team-twg.ca

TWG Headquarters  
PO Box 1130  
Jenks OK 74037-1130 USA  
Phone: +1-918-298-8300

# Tulsa Winch® Products Work As Hard As You Do

Tulsa Winch engineers the industry's most advanced planetary and worm gear winches, hoists and swing drives for large oilfield trucks, heavy haul tractor packages, digger derricks, cranes and aerial work platforms serving the energy and infrastructure industries.

## Rufnek® with Intelliguard™ Planetary Winches

Ideal for tough oilfield and heavy-haul applications, with pulling capacities from 45,000 to 130,000 pounds. Designed with industry-leading Intelliguard™ technology.

- Intelliguard™ is proven technology to help avoid failure points, extend equipment life, and enhance warranty, liability and service programs;
- Measures torque on the shaft of the winch then displays the winch's rated capacity to help operators avoid overloading;
- Data-logging feature records all critical winch events, including clutch engagement and disengagement.

## Planetary and Worm Gear Hoists

Ideally suited for boom trucks and other lifting applications, Tulsa Winch planetary hoists are designed with linepulls from 5,000 to 15,000 pounds.

- Large drum-to-cable diameter ratios
- Spring-applied hydraulically released brakes
- Multiple motor options to meet the exact needs of the application

## Planetary and Worm Gear Swing Drives

Tulsa Winch offers a complete line of planetary and worm gear swing drives ranging in output torque from 6,000 in-lbs. to 72,000 in-lbs. Ideal for truck-mounted and rough terrain cranes, utility digger derricks, and all other applications where rotation bearings need to be driven hydraulically.



As a leader in product innovation, TWG is committed to the ongoing improvement of its equipment. TWG reserves the right to make changes to our products without notice.

PO Box 1130  
Jenks OK 74037-1130 USA  
Phone: +1-918-298-8300  
[www.team-twg.com](http://www.team-twg.com)

