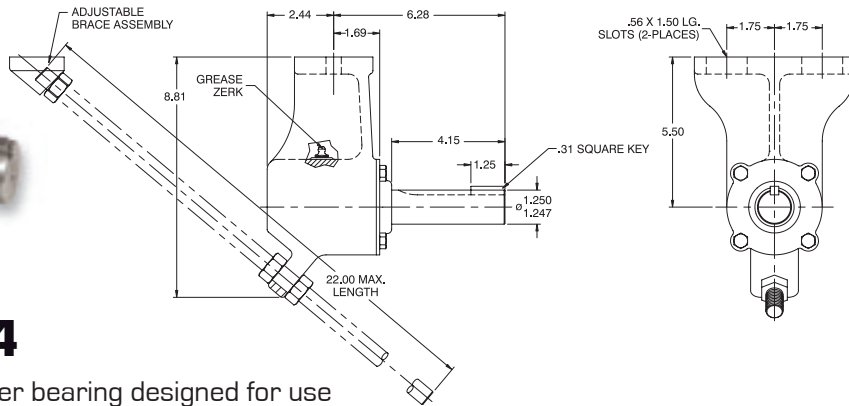


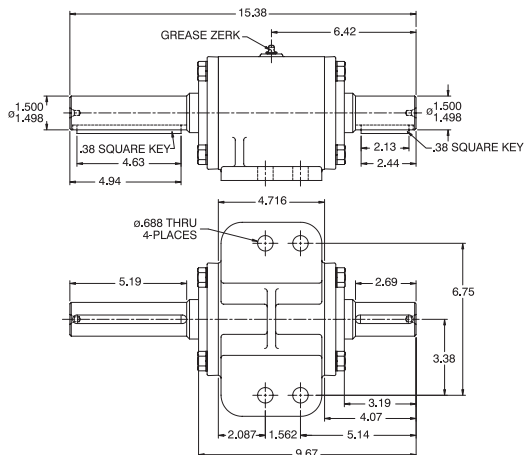
HANGER BEARINGS

Simplifies installation. Factory-certified components.



HB544

1-1/4" hanger bearing designed for use on models RN10W through RN30W.



HB800

1-1/2" hanger bearing designed for use on models RN45W through RN130W.



MECHANICAL DRIVE GROUPS



Complete drive group ready to install.

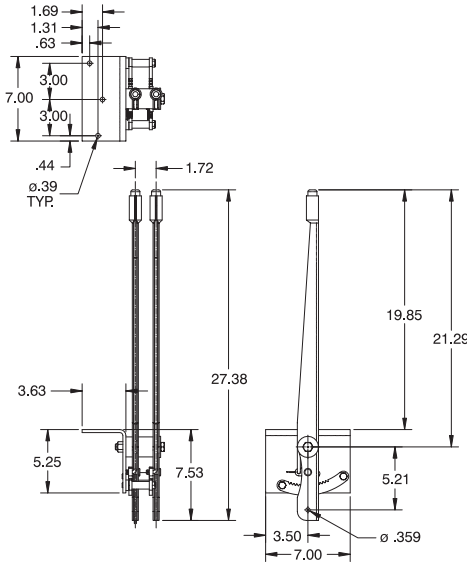
Driveline, hanger bearing, sprockets and chain.

Winch Model	Part #	Weight (approx./lb)	Description
RN10W, RN15W	1246	100	HB-544 hanger bearing, (1) sprocket, 11T, 1-1/4" bore, (1) sprocket, 20T, 1-1/4" bore and 3-3/4' chain
RN20W	1084	100	HB-544 hanger bearing, (1) sprocket, 10T, 1-1/4" bore, (1) sprocket, 18T, 1-1/4" bore and 4-1/2' chain
RN30W	1134	100	HB-544 hanger bearing, (1) sprocket, 10T, 1-1/4" bore, (1) sprocket, 21T, 1-1/4" bore and 5' chain
RN45W, RN65W	4043	210	HB-800 hanger bearing, (1) sprocket, 18T, 1-3/4" bore, (1) sprocket, 12T, 1-1/2" bore and 10' chain
RN45W, RN65W	4044	185	HB-800 hanger bearing, (1) sprocket, 18T, 1-3/4" bore, (1) sprocket, 12T, 1-1/2" bore and 5' chain
RN100W	4045	210	HB-800 hanger bearing, (1) sprocket, 18T, 2" bore, (1) sprocket, 12T, 1-1/2" bore and 10' chain
RN100W, RN130W	4046	185	HB-800 hanger bearing, (1) sprocket, 18T, 2" bore, (1) sprocket, 12T, 1-1/2" bore and 5' chain

DOUBLE LEVER ASSEMBLY

Allows remote mechanical operation of winch with ratchet and pawl lock.

Includes levers, threaded rod, clevis, nuts, washers, cap screws and pins.



AIR CONTROL KITS



Complete system to convert winch to air-shift configuration.

Includes cylinders, tubing, fittings, clutch valve and metering valve for brake band.

Winch Model	Part #	Weight (approx./lb)	Description
RN20W	41618	15	Air shift cylinder, clutch and brake (1)
RN30W	40285	15	Air shift cylinder, clutch and brake (1)
RN45W, RN65W	40246	23	Air shift cylinder, clutch and brake (1)
RN100W	40593	26	Air shift cylinder, clutch and brake (1)

HYDRAULIC DRIVE GROUPS



Complete drive group ready to install.

Includes pump, reservoir, filter and control valve.

Winch Model	Part #	Pump Rotation	Description
RN10W, RN15W	4094	Bidirectional	18 gpm system, 15 gallon reservoir
RN20W, RN30W	4096	Bidirectional	30 gpm system, 25 gallon reservoir
RN45W, RN65W, RN100W	4098/4099	RH/LH	60 gpm system, 50 gallon reservoir