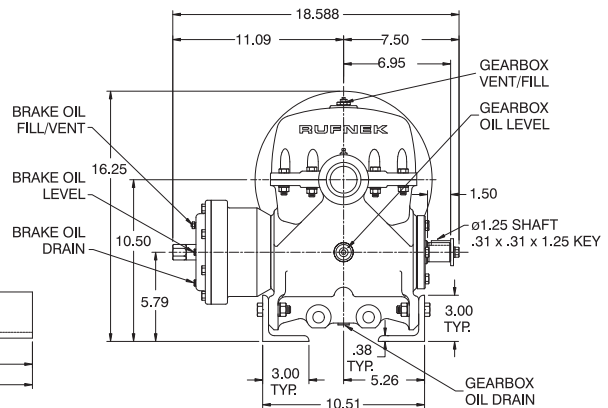
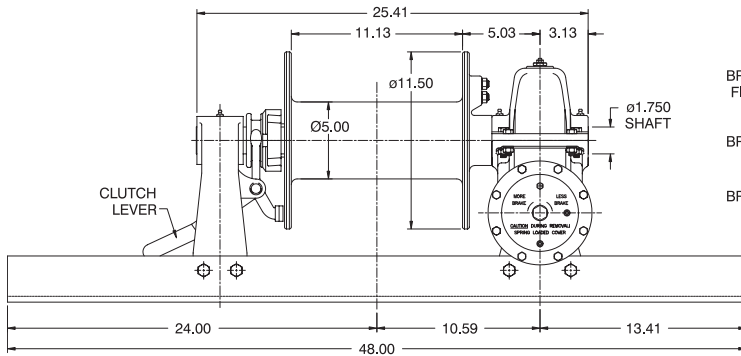
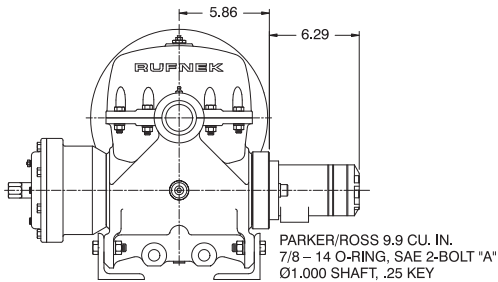
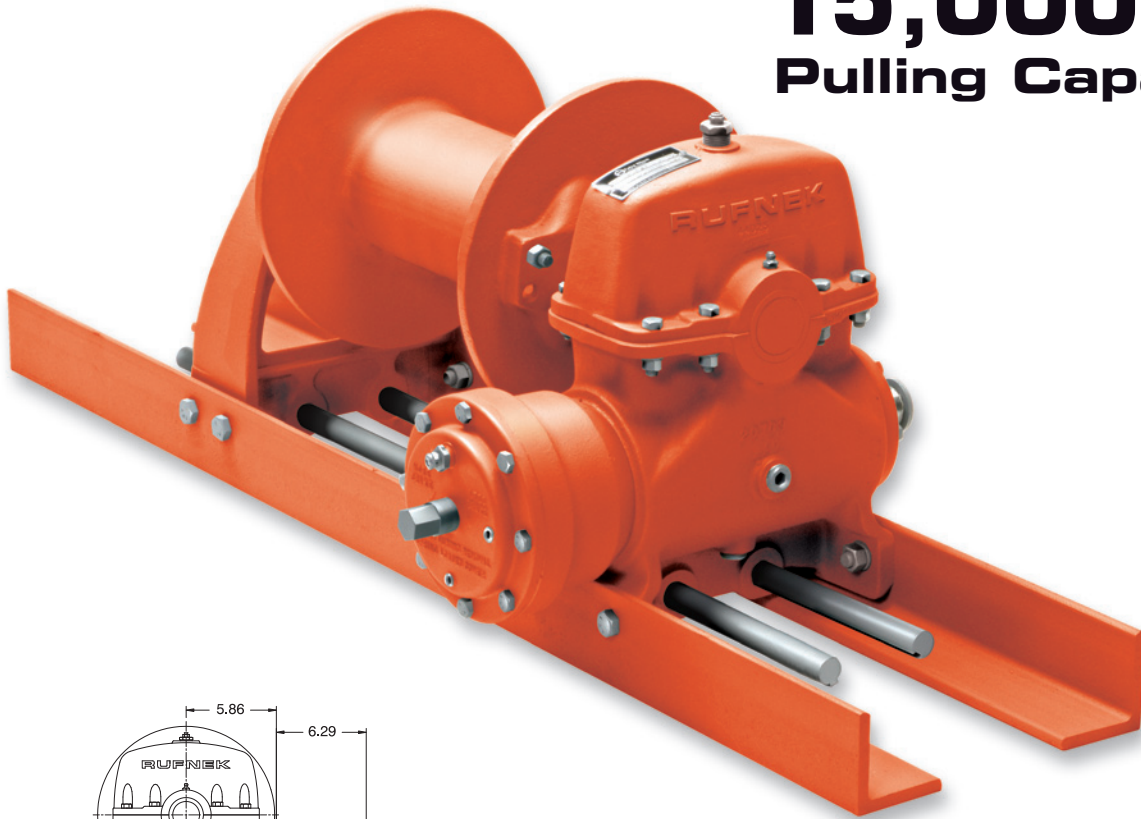


15,000 lb. Pulling Capacity



Approximate weight: 260 lb Mechanical / 276 lb Hydraulic

HYDRAULIC PERFORMANCE DATA						MECHANICAL DRIVE					
Layer	Linepull (lb)	Linepull (kg)	Linespeed (fpm)	Linespeed (mpm)	Cable Cap. - .5" Ø (ft)	Cable Cap. - .5" Ø (m)	Input Torque-Static (lb-in)	Input Torque-Static (Nm)	Input Torque-Dynamic (lb-in)	Input Torque-Dynamic (Nm)	Input Speed (rpm)
1	15,000	6,804	17	5	29	9	3,307	374	2,412	273	max. 600
2	12,700	5,761	20	6	62	19	HYDRAULIC DRIVE (9.9 CID Motor)				
3	11,006	4,992	23	7	101	31	Pressure		Flow		
4	9,712	4,405	27	8	145	44	(Δ psi)	(Δ bar)	(gpm)	(lpm)	
5	8,989	4,077	30	9	194	59	2,000	138	15	57	
5.00 BBI x 11.50 FL x 11.13 W											
CAUTION:		WARNING:				Cable Size (in)	Capacity (ft)	Capacity (m)			
The last 5 wraps of cable must be left on the drum to assist the cable clamp in holding the load.		Winches and capstans are not intended to be used for lifting or moving of persons.				0.4375	269	82			
						0.5625	130	40			

RN15W

RUFNEK® Worm Gear Winches