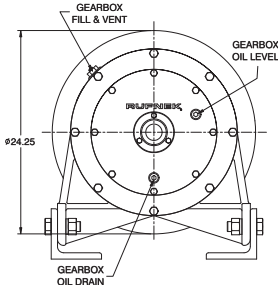
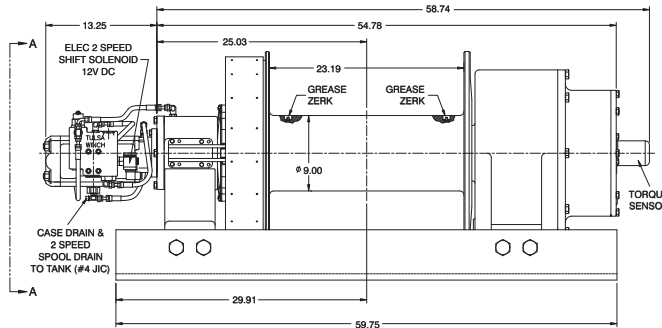
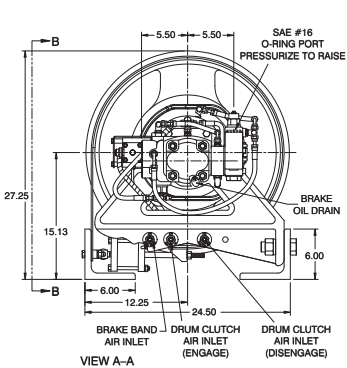
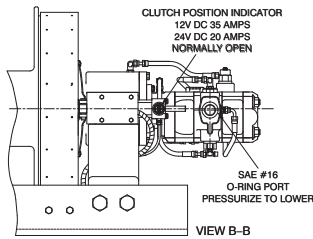
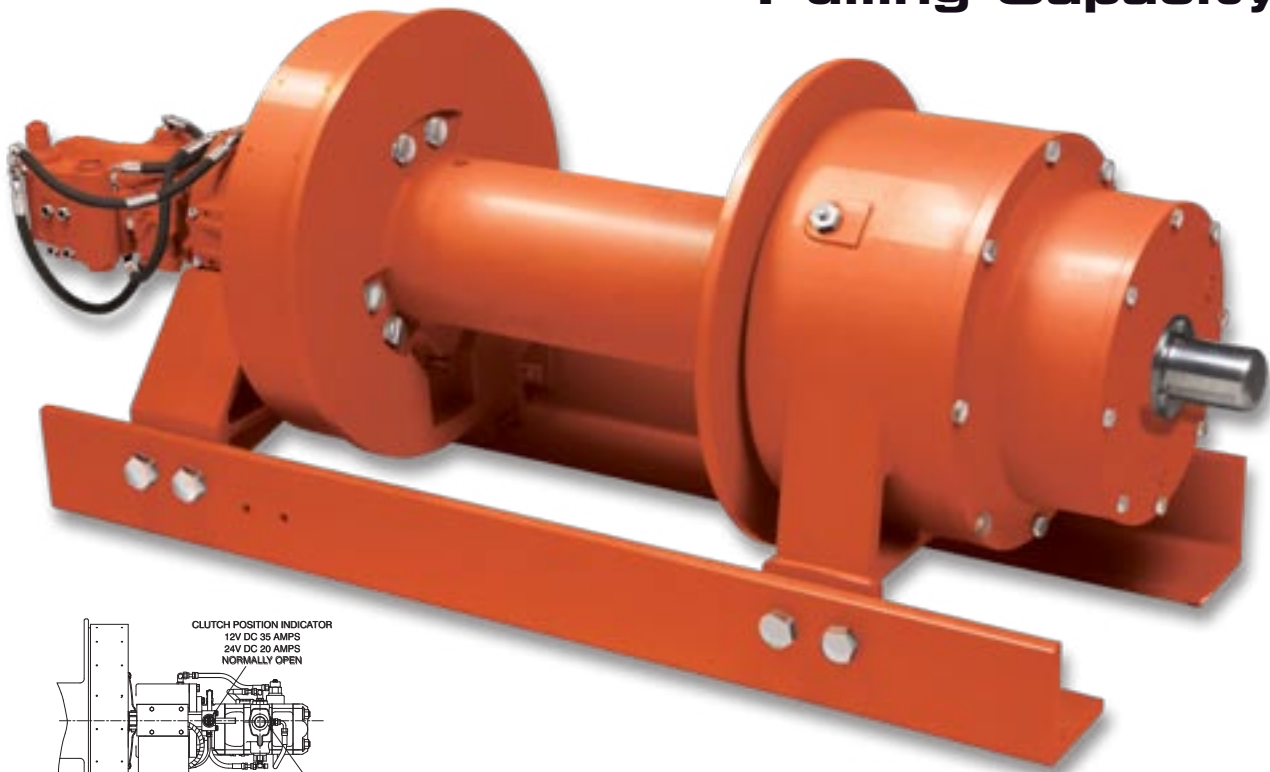


100,000 lb. Pulling Capacity



Approximate weight: 2,060 lb / 934 kg

PERFORMANCE DATA

2,750 PSI @ 60 GPM / 190 BAR @ 227 LPM

Layer	Low Speed				High Speed				Cable	
	Linepull (lb)	Linepull (kg)	Linespeed (fpm)	Linespeed (mpm)	Linepull (lb)	Linepull (kg)	Linespeed (fpm)	Linespeed (mpm)	Capacity (ft)	Capacity 1.125" Ø (m)
1	100,000	45,357	23	7	45,901	20,816	49	15	53	16
2	81,830	37,110	28	8	37,555	17,031	60	18	118	36
3	69,241	31,401	33	10	31,777	14,411	71	22	194	59
4	60,009	27,214	38	12	27,540	12,490	82	25	283	86
5	52,949	24,012	43	13	24,300	11,020	93	28	383	117
6	47,376	21,485	48	15	21,742	9,860	104	32	495	151

CAUTION:

The last 5 wraps of cable must be left on the drum to assist the cable clamp in holding the load.

WARNING:

Winches and capstans are not intended to be used for lifting or moving of persons.

RUFNEK® with *Intelliguard™* Planetary Winch

**If winch
overloading
is costing you,
it's time you
discovered
RUFNEK® with
Intelliguard™.**



RUFNEK® with *Intelliguard™*

- ● ● Field-proven technology to reduce accidents, injuries, equipment failure and costly downtime due to winch overloading
- ● ● Captures critical data on winch overload activity, including date and time of event
- ● ● Records start-and-stop run times of the truck engine
- ● ● Provides an electronic record of vital winch data that is easy to analyze
- ● ● Easy-to-read light indicator alerts operators to safe and unsafe loading capacities based on winch rating, enabling them to make better, safer operating decisions
- ● ● Allows fleet and safety managers to properly size winches for specific applications

Available as a retrofit
on any in-field RUFNEK®
planetary winch



www.team-twg.com

PO Box 1130 | Jenks, OK 74037-1130
voice 918.298.8300 | fax 918.298.8367