

# Introducing the New Planetary Reducer Series

40,000 to 250,000 in-lb Intermittent Operation

## Advanced Features and Superior Benefits

**Compact modular design for the ultimate flexibility to meet application needs**

Reduced weight and size with easier servicing

**Precision planetary gearing**

Quiet, compact and proven high-efficiency design

**Robust heavy-duty output shaft and bearings**

Long life and solid performance with minimal deflection

**Optional integrated spring-applied, hydraulically-released brake**

Smooth operation and compact design

**Optional motor/counter balance assembly**

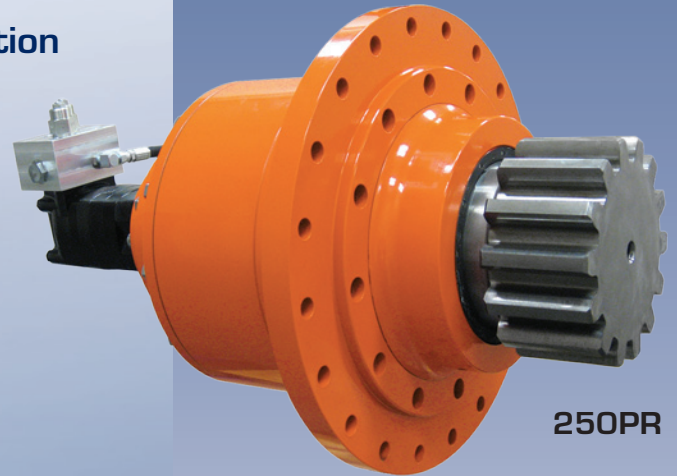
Matched mechanical/hydraulic components, drop in installation, applications specific displacement and speed

**Optional lifetime lubed shaft bearings**

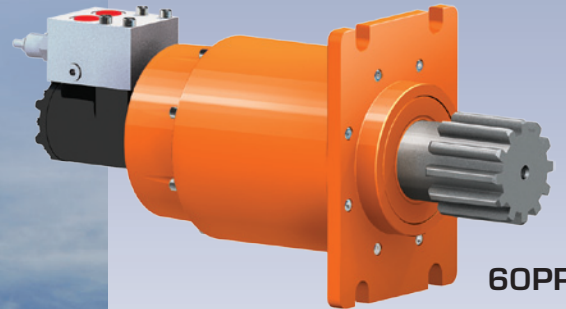
Minimal maintenance requirements

**Ported for shaft up, shaft down and horizontal applications**

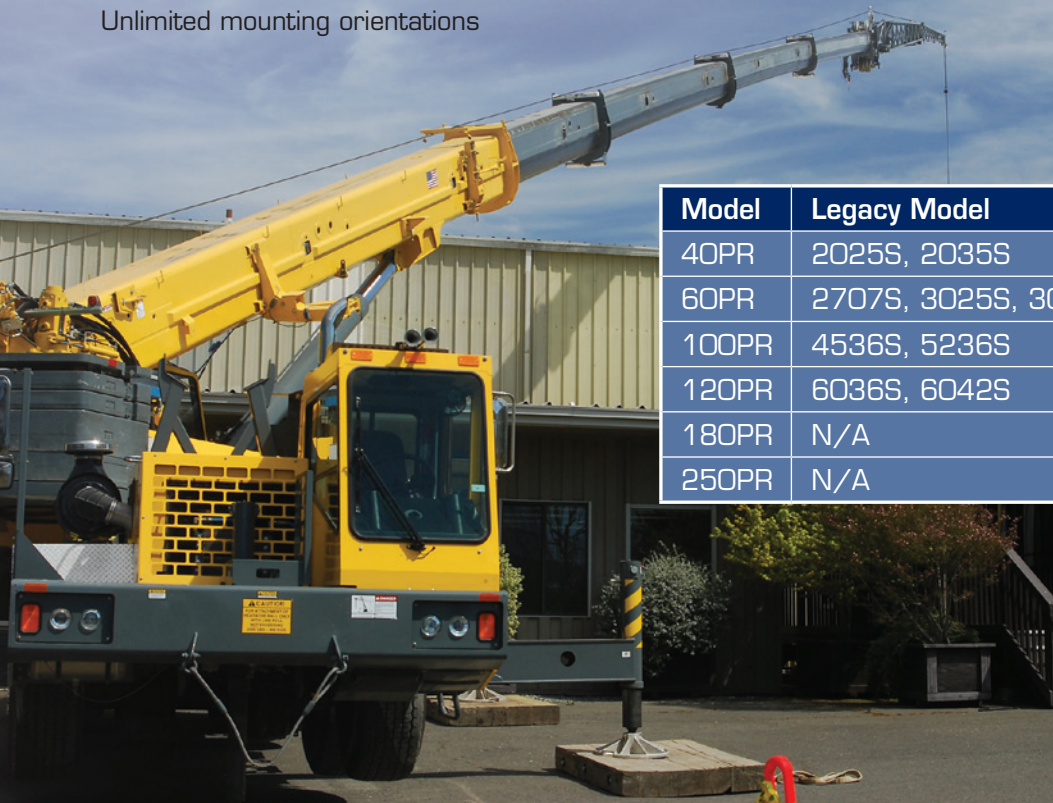
Unlimited mounting orientations



250PR



60PR



Model	Legacy Model	Intermittent Rating
40PR	2025S, 2035S	40,000 in-lb (4520 Nm)
60PR	2707S, 3025S, 3035S	60,000 in-lb (6780 Nm)
100PR	4536S, 5236S	100,000 in-lb (11,300 Nm)
120PR	6036S, 6042S	120,000 in-lb (13,560 Nm)
180PR	N/A	180,000 in-lb (20,340 Nm)
250PR	N/A	250,000 in-lb (28,250 Nm)



Infrastructure | Energy | Recovery

[www.team-twg.com](http://www.team-twg.com)

TWG is a global leader in standard and engineered winch, gearbox and electronic monitoring systems.

USA – DP Winch, Gear Products, Greer and Tulsa Winch:  
Canada – LANTEC, Pullmaster:  
Latin America:  
Europe:

[sales@team-twg.com](mailto:sales@team-twg.com)  
[sales@team-twg.ca](mailto:sales@team-twg.ca)  
[sales-BR@team-twg.com](mailto:sales-BR@team-twg.com)  
[salesEU@team-twg.com](mailto:salesEU@team-twg.com)

TWG Headquarters  
PO Box 1130  
Jenks OK 74037-1130 USA  
Phone: +1-918-298-8300

dp Winch | Gear Products | Greer Company | LANTEC | Pullmaster | Tulsa Winch