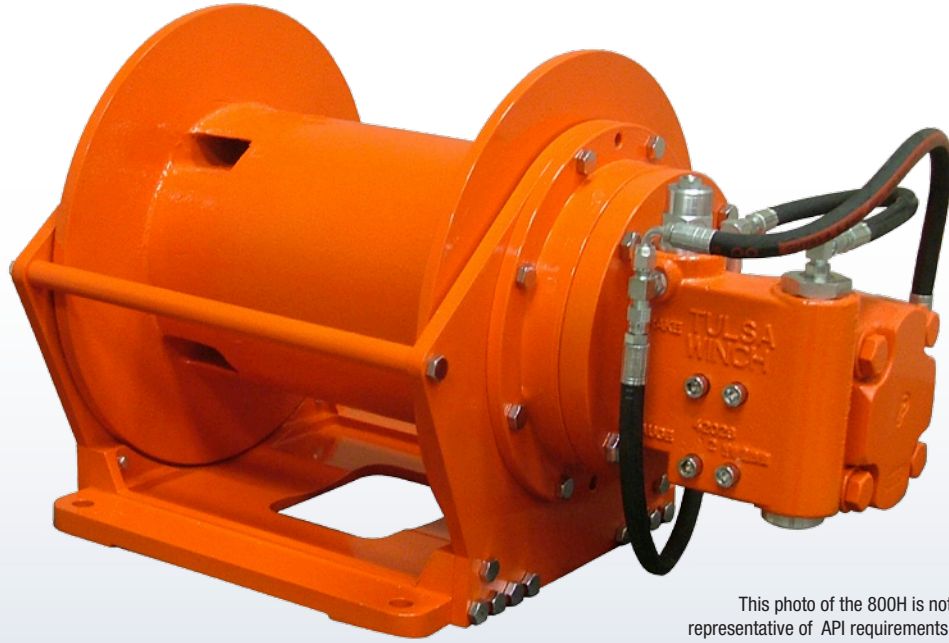


# Model 800H API Industrial Hoist

8,000 lb Line Pull



This photo of the 800H is not representative of API requirements.

## Advanced Features and Superior Benefits

**Multiple motor sizes and gear ratios available**

Optimal application flexibility and versatility

**Integral, spring-applied, hydraulically released static brake with segregated oil cavity**

Long life and easy serviceability

**Industry proven motor-mounted counterbalance valve**

Superior control, smooth operation and dynamic braking

**Two-stage planetary gearing**

Compact, efficient and low maintenance



**POWER to Move the World™**

A **DOVER** COMPANY

**Infrastructure | Energy | Recovery**

TWG is a global leader in standard and engineered winch, gearbox and electronic monitoring systems.

USA: DP Winch: [sales@team-twg.com](mailto:sales@team-twg.com)  
Greer: [sales@team-twg.com](mailto:sales@team-twg.com)  
Tulsa Winch: [sales@team-twg.com](mailto:sales@team-twg.com)

Canada: LANTEC: [sales@team-twg.ca](mailto:sales@team-twg.ca)  
Pullmaster: [sales@team-twg.ca](mailto:sales@team-twg.ca)

Latin America: [sales-BR@team-twg.com](mailto:sales-BR@team-twg.com)  
Europe: [salesEU@team-twg.com](mailto:salesEU@team-twg.com)

TWG Headquarters  
PO Box 1130  
Jenks OK 74037-1130 USA  
Phone: +1-918-298-8300

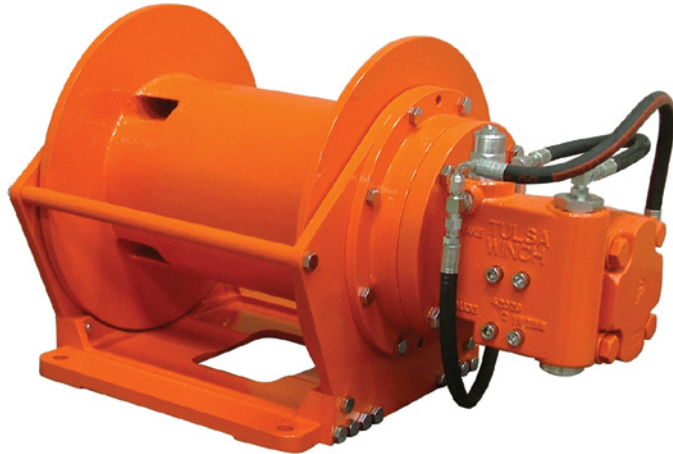
[www.team-twg.com](http://www.team-twg.com)

**dp Winch | Greer Company | LANTEC | Pullmaster | Tulsa Winch**

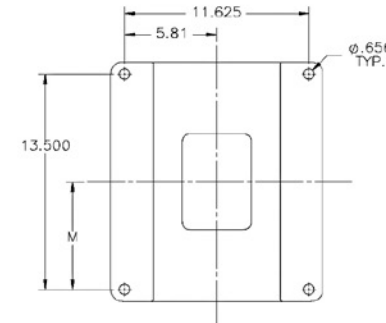
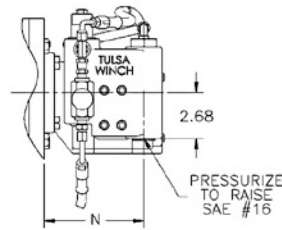
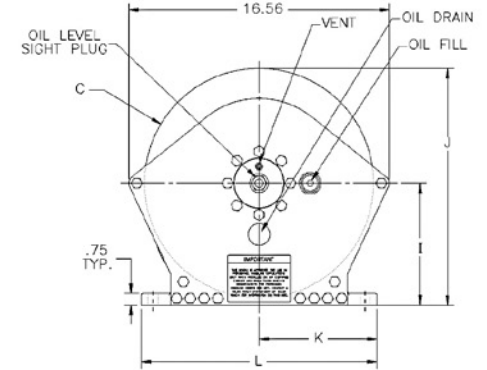
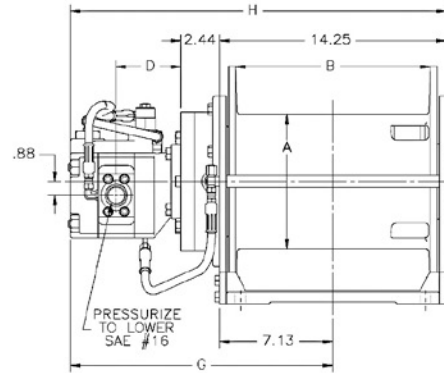
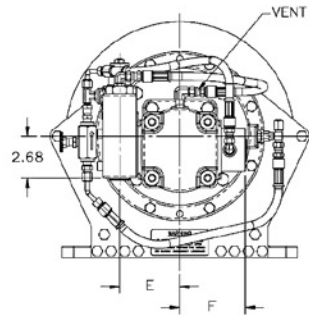


# Model 800H API Industrial Hoist

## 8,000 lb Line Pull



This photo of the 800H is not representative of API requirements.



**CAUTION:**  
The last 5 wraps of cable must be left on the drum to assist the cable clamp in holding the load.

P/N	Arrangement	CID	Ratio	A	B	C	D	E	F	G	H	I	J	K	L	M	N
82262001	LO	2.94	59:1	8.5	12.24	14.56	4.06	3.84	4.16	16.5	23.63	7.75	15.03	7.5	15	6.75	5.86
82264001	LO	3.94	34:1	8.5	12.24	14.56	4.31	3.84	4.16	17	24.13	7.75	15.03	7.5	15	6.75	6.11
82267001	LO	3.94	23:1	8.5	12.25	14.56	4.31	3.84	4.16	17	24.13	7.75	15.03	7.5	15	3.75	6.11

P/N 82262001			
Gear Ratio	Winch Performance at		Total Drum Capacity
	50 GPM	1,900 psi	
Layer	Stall Line Pull (lbs)	Winch Speed (fpm)	n .50 Cable
59:1			
1	8,000	141	57
2	7,231	157	119
3	6,574	172	189
4	6,026	188	264
5	5,562	204	346
6*	5,165	219	434

P/N 82264001			
Gear Ratio	Winch Performance at		Total Drum Capacity
	65 GPM	2,425 psi	
Layer	Stall Line Pull (lbs)	Winch Speed (fpm)	n .50 Cable
34:1			
1	8,000	244	57
2	7,230	271	119
3	6,572	298	189
4	6,025	326	264
5	5,561	353	346
6*	5,164	380	434

P/N 82267001			
Gear Ratio	Winch Performance at		Total Drum Capacity
	65 GPM	3,000 psi	
Layer	Stall Line Pull (lbs)	Winch Speed (fpm)	n .50 Cable
23:1			
1	6,685	361	57
2	6,020	401	119
3	5,470	441	189
4	5,010	481	264
5	4,630	521	346
6*	4,300	561	434

\*This layer does not meet ANSI 30.5 for .50 inch flange freeboard.

Contact a TWG sales representative about other available configurations.

As a leader in product innovation, TWG is committed to the ongoing improvement of its equipment. TWG reserves the right to make changes to our products without notice.

Tulsa Winch is part of TWG, a global leader in standard and engineered winch, gearbox and electronic monitoring systems.

PO Box 1130  
Jenks OK 74037-1130 USA  
Phone: +1-918-298-8300  
[www.team-twg.com](http://www.team-twg.com)

