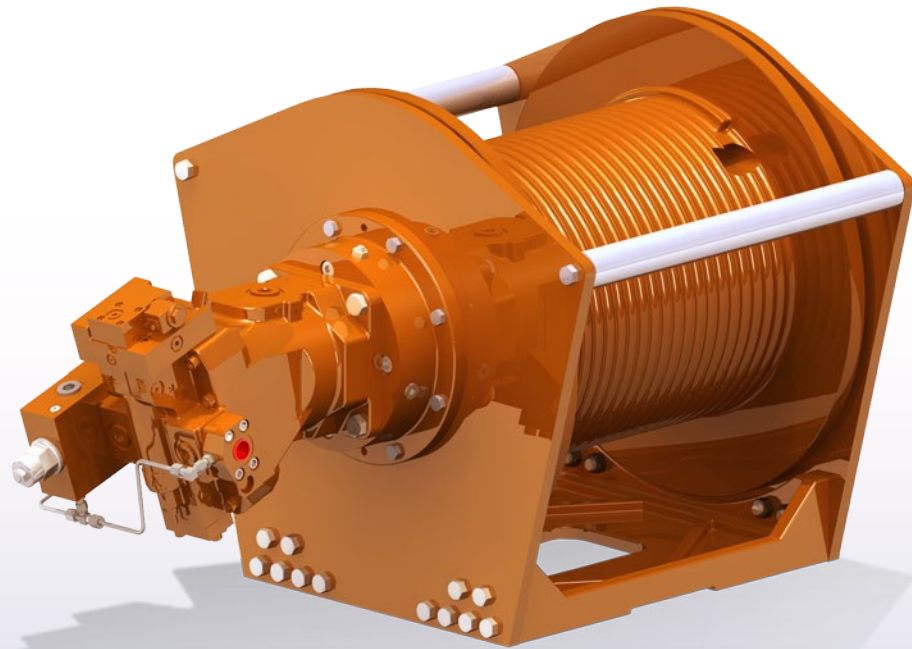


# Model 2100H Industrial Hoist

21,000 lb Line Pull



## Advanced Features and Superior Benefits

### DRI / LLI Ready

- Operator aid provides alarm when drum rotation begins
- Warns when the last rope layer is reached
- Warns when a preset number of rope wraps remain on the drum (set by operator)

### Piston Motor

Smooth, precise operation

### Integral, spring-applied, hydraulically-released static brake with segregated oil cavity

Superior control, smooth operation and dynamic braking

### Two-stage planetary gearing

Compact, efficient and low maintenance



Infrastructure | Energy | Recovery

[www.team-twg.com](http://www.team-twg.com)

**POWER to Move the World™**

A **DOVER** COMPANY

TWG is a global leader in standard and engineered winch, gearbox and electronic monitoring systems.

USA: DP Winch: [sales@team-twg.com](mailto:sales@team-twg.com)  
Gear Products: [sales@team-twg.com](mailto:sales@team-twg.com)  
Greer: [sales@team-twg.com](mailto:sales@team-twg.com)  
Tulsa Winch: [sales@team-twg.com](mailto:sales@team-twg.com)

Canada: LANTEC: [sales@team-twg.ca](mailto:sales@team-twg.ca)  
Pullmaster: [sales@team-twg.ca](mailto:sales@team-twg.ca)

Latin America: [sales-BR@team-twg.com](mailto:sales-BR@team-twg.com)  
Europe: [salesEU@team-twg.com](mailto:salesEU@team-twg.com)

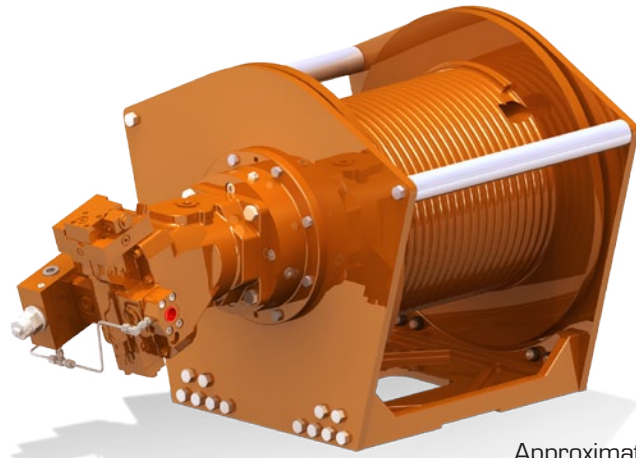
TWG Headquarters  
PO Box 1130  
Jenks OK 74037-1130 USA  
Phone: +1-918-298-8300

**DP Winch | Gear Products | Greer Company | LANTEC | Pullmaster | Tulsa Winch**

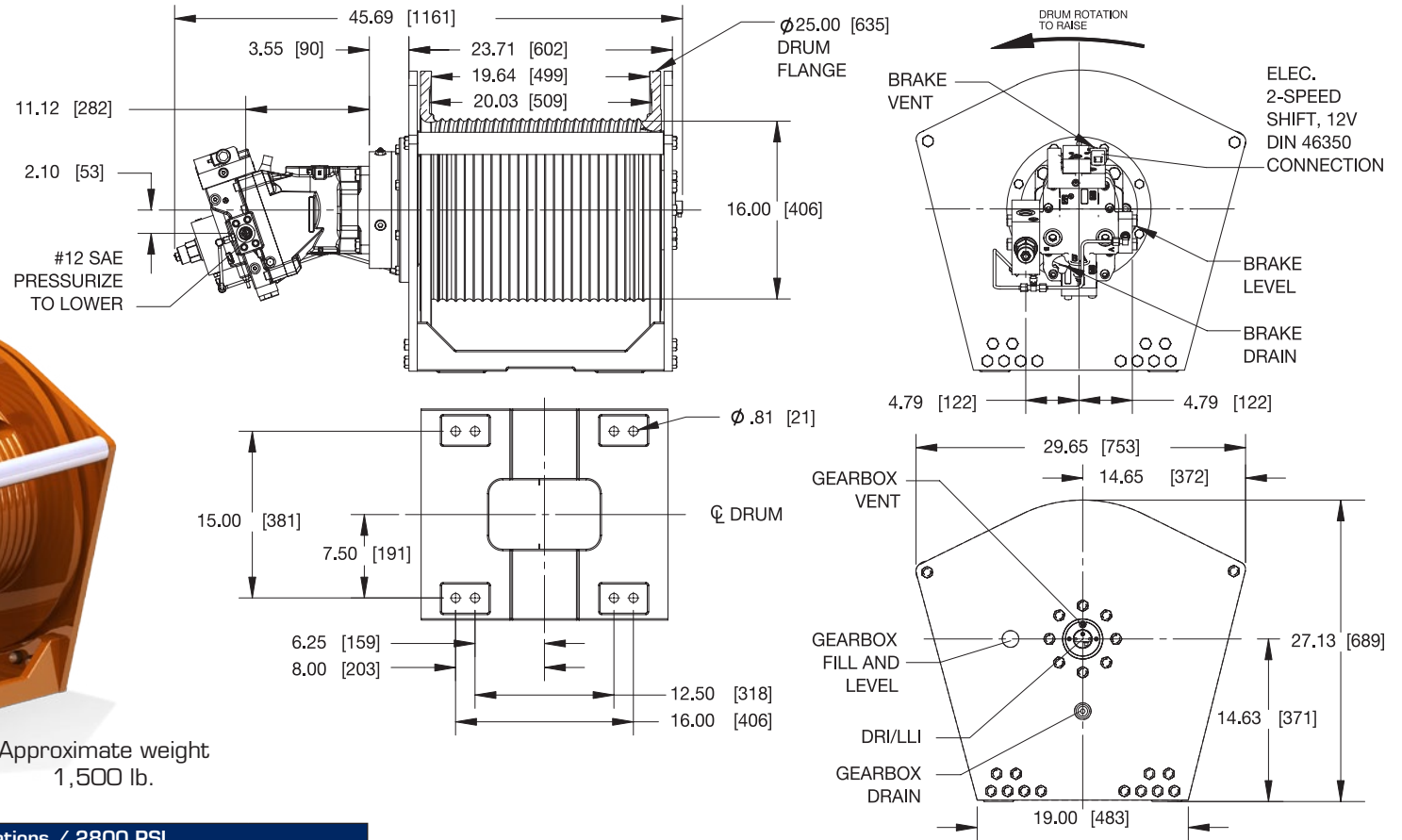


# Model 2100H Industrial Hoist

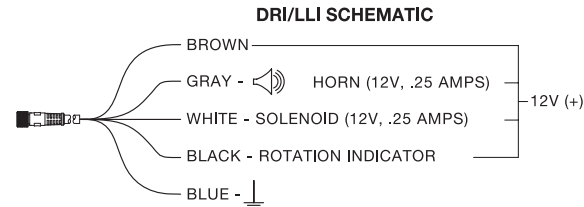
## 21,000 lb Line Pull



Approximate weight  
1,500 lb.



Winch Performance Specifications / 2800 PSI					
Gear Ratio	Winch Performance at Low Speed		Winch Performance at Low Speed		Total Drum Capacity
	72 GPM	9.28 CID	72 GPM	9.28 CID	
Layer	Winch Speed (fpm)	Stall Line Pull (lbs)	Winch Speed (fpm)	Stall Line Pull (lbs)	Ø .750 Cable
1	136	21,000	230	12,433	143
2	148	19,283	250	11,417	299
3	160	17,826	271	10,554	467
4	172	16,574	291	9,813	648
5	184	15,486	312	9,169	842



**WARNING:**  
Winches are not intended to be used for the lifting or moving of persons.

**CAUTION:**  
The last 5 wraps of cable must be left on the drum to assist the cable clamp in holding the load.

Contact a TWG sales representative about other available configurations.

As a leader in product innovation, TWG is committed to the ongoing improvement of its equipment. TWG reserves the right to make changes to our products without notice.

Tulsa Winch is part of TWG, a global leader in standard and engineered winch, gearbox and electronic monitoring systems.

PO Box 1130  
Jenks OK 74037-1130 USA  
Phone: +1-918-298-8300  
[www.team-twg.com](http://www.team-twg.com)

