

<b>LANTEC</b>		<b>Sales Bulletin</b>		<b>50040</b>	
<b>Personnel Rating for Tower Erection Hoists</b>				Page 1 of 2	
<b>Orig Date</b>	Oct 01/02	<b>Rev Date</b>	Oct 15/02		
<b>Orig Author</b>	JWM	<b>Rev Author</b>	JWM		
LANTEC reserves the right to change this bulletin without notice and without obligation. Refer to our web site or contact LANTEC to verify the current revision level.		<b>Rev Level</b>	1		

**Product Scope:**

## LANTEC LWS Series Winches Only

**Advice:**

**General Statement**

Tower Erection Hoists consist of a complete system including a winch, hydraulic power unit, controls, safety interlocks, mounting skid, wire rope, sheaves, etc. The LANTEC winch forms only part of a complete system and as such is "Personnel Rated" only when the following conditions are satisfied:

1. The Winch is used for personnel handling **ONLY** in Tower Erection operations. No other personnel handling use is permitted.
2. The Winch is always used within its Design Load Limit when handling materials.
3. The Personnel Rated Load is limited to 10% of the Design Load Limit.
4. The Winch is always installed with the LANTEC supplied Hydraulic Motor, direct mounted Brake Valve, and brake test shut-off valve.
5. The Winch must be installed, inspected, serviced, and maintained in accordance with LANTEC instructions and all applicable regulatory requirements, including but not limited to OSHA Directive CPL 2-1.36 or its current revision, whichever is more comprehensive.
6. A Winch Brake Test must be performed every 6 months to ensure proper brake function.

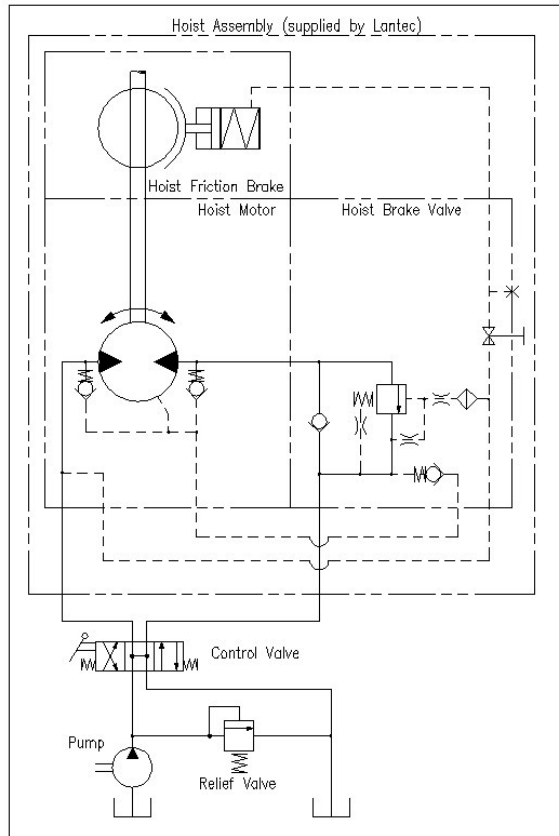
**Winch Marking**

A LANTEC Winch intended for personnel handling in Tower Erection operations will carry a factory label indicating same. The label will indicate the following:

1. LANTEC Winch Model Number
2. LANTEC Winch Serial Number
3. Working Load Limit
4. Personnel Service Load Limit

### Example Hydraulic Circuit

The Winch should be installed with a complete hydraulic circuit including any interlocks and/or other devices applicable to the safe operation of a personnel rated system. This circuit is for illustration only and does not contain all the components that may be required for full system function.



## LANTEC

a division of IMAC Design Group Ltd  
5827 Production Way  
Langley, BC, Canada V3A 4N5  
Tel (604) 530-0737 - Fax (604) 530-2889  
email: [lantec@lantecgear.com](mailto:lantec@lantecgear.com) - web site: [www.lantecgear.com](http://www.lantecgear.com)

