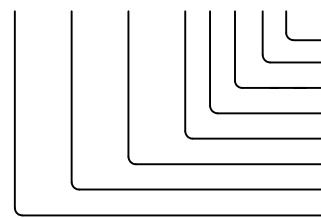
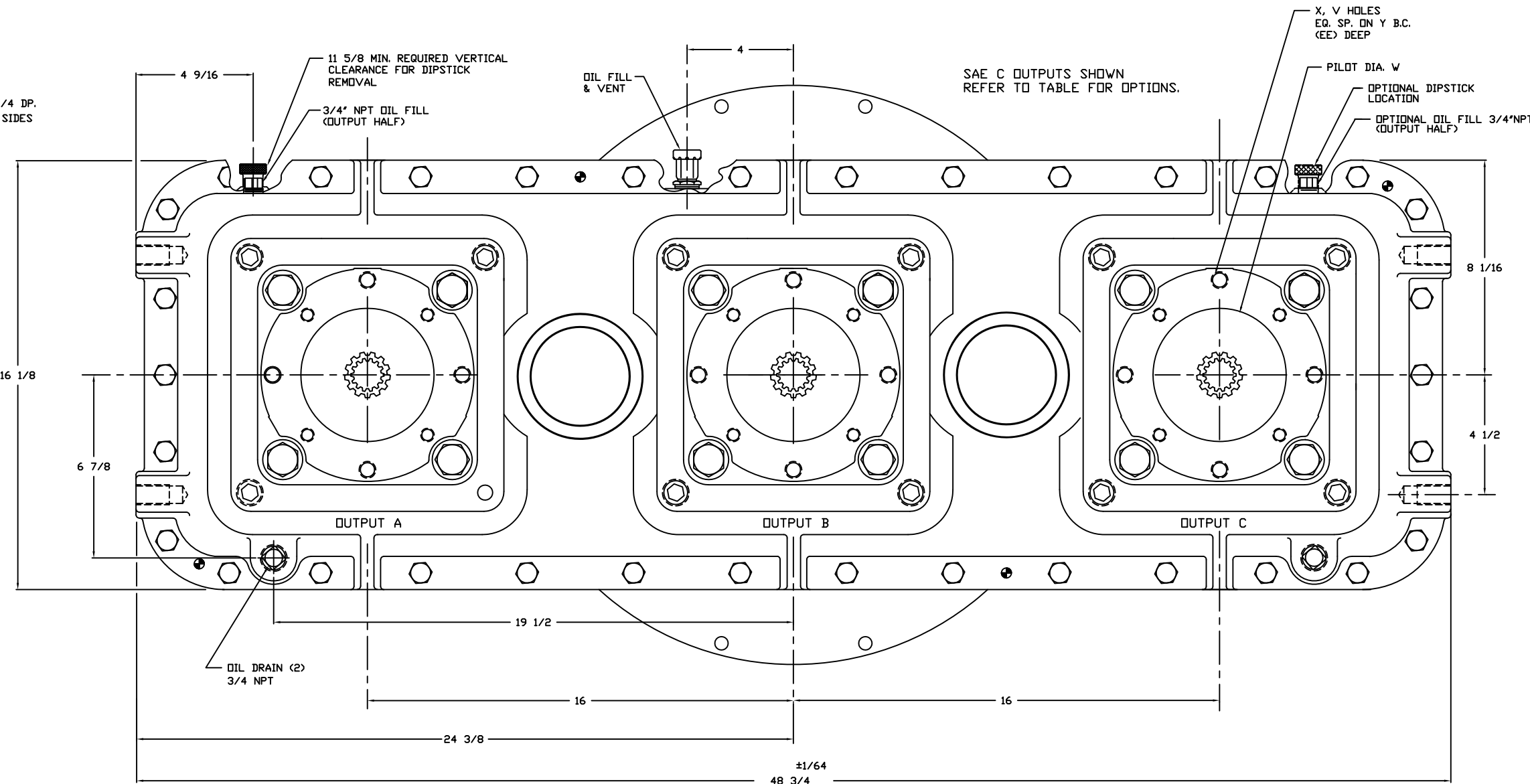
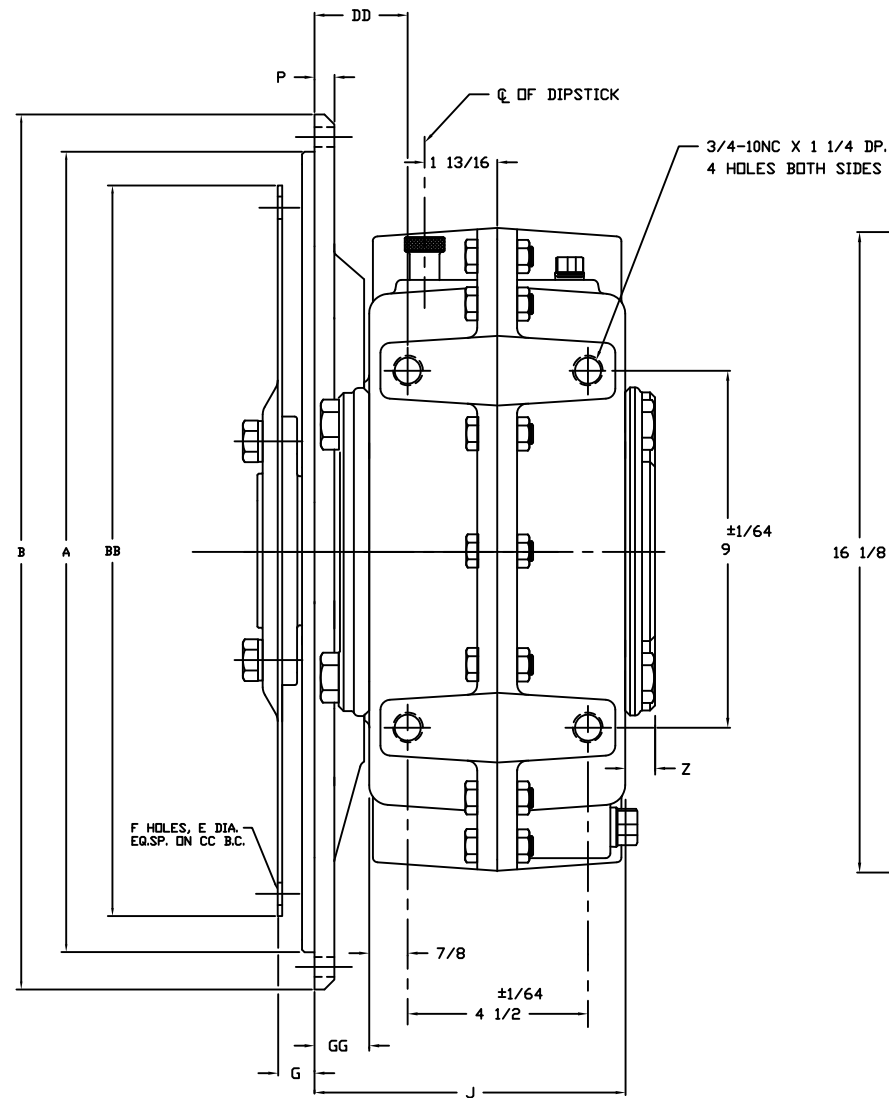
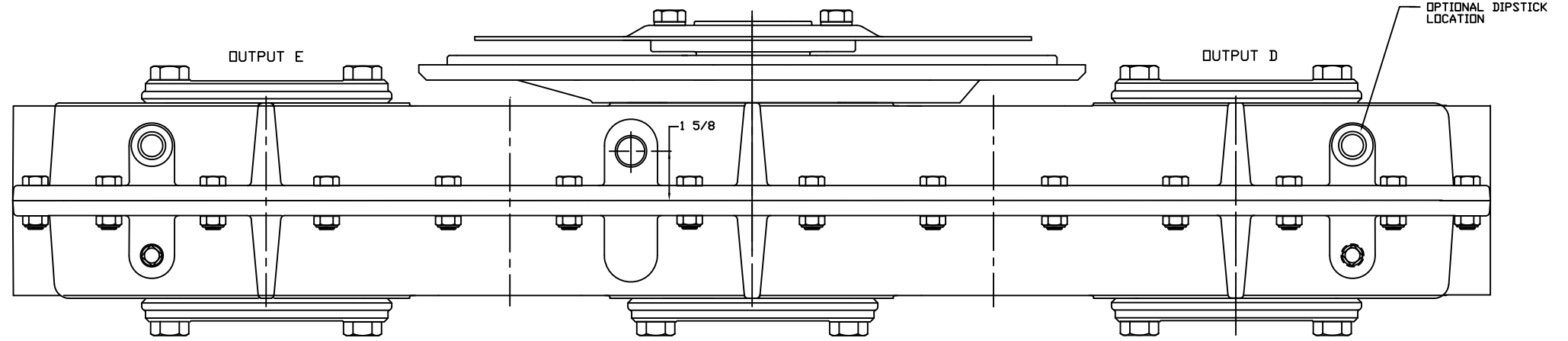


HPD MODEL CODE

DP58 - * - * - * - * * * * *



OUTPUT POSITION E
 OUTPUT POSITION D
 OUTPUT POSITION C
 OUTPUT POSITION B
 OUTPUT POSITION A
 GEAR RATIO
 FLYWHEEL NOMINAL PLATE SIZE
 SAE FLYWHEEL HOUSING SIZE



* SURFACE BETWEEN PUMP AND GEAR BOX IS SEALED WITH 1/32 THICK GASKET

SAE #1 ENGINE ADAPTOR AND 14" DRIVE PLATE SHOWN. REFER TO TABLES FOR OPTIONS.

SAE SIZE	PUMP FLANGE DIMENSIONS REF SAE J744				(EE)	(Z)	NO. TEETH	PITCH
	NO. BOLTS (V)	PILOT DIA. (W)	BOLT SIZE (X)	B.C. DIA. (Y)				
A	2	3.250	3/8-16	4.18	.62	9	16/32	
B	2	4.000	1/2-13	5.75	.56	13	16/32	
B	4	4.000	1/2-13	5.00	1.00	13	16/32	
BB	2	4.000	1/2-13	5.75	.56	15	16/32	
BB	4	4.000	1/2-13	5.00	1.00	15	16/32	
C	2	5.000	5/8-11	7.12	.75	14	12/24	
C	4	5.000	1/2-13	6.37	.75	14	12/24	
CC	2	5.000	5/8-11	7.12	.75	17	12/24	
CC	4	5.000	1/2-13	6.37	.75	17	12/24	
D	2	6.000	3/4-10	9.00	1.00	13	8/16	
D	4	6.000	3/4-10	9.00	1.00	13	8/16	
E	4	6.500	3/4-10	12.50	.87	13	8/16	
F	4	7.000	1-8	13.78	1.06	15	8/16	

AVAILABLE GEAR RATIOS		
GEAR RATIO U-SPEED INCREASING D-SPEED DECREASING	MAX. INPUT SPEED (RPM)	
	U	D
1:1 E	2750	
1.09 UD	2750	
1.19 U	2500	
1.32 U	2300	

DRIVE PLATE DIMENSIONS REF SAE J620					
NOMINAL DRIVE PLATE DIAMETER	BB	E	F	G	CC
11 1/2	13.875	7/16	8	1.56	13.12
14	18.375	9/16	8	1.00	17.25
16	20.375	9/16	8	.62	19.25
18	22.500	11/16	6	.62	21.37

ENGINE ADAPTOR DIMENSIONS REF SAE J617										
SAE NO.	A	B	C	D	H	J	P	DD	GG	UNIT WT. (LBS.)
3	16.125	16.87	16.87	7/16	12	7.50	1/2	2.125	1 1/4	295
2	17.625	19.25	18.37	7/16	12	7.50	1/2	2.125	1 1/4	310
1	20.125	21.75	20.87	1/2	12	7.50	1/2	2.125	1 1/4	320
0	25.500	28.00	26.75	9/16	16	8.00	1	2.625	1 3/4	390