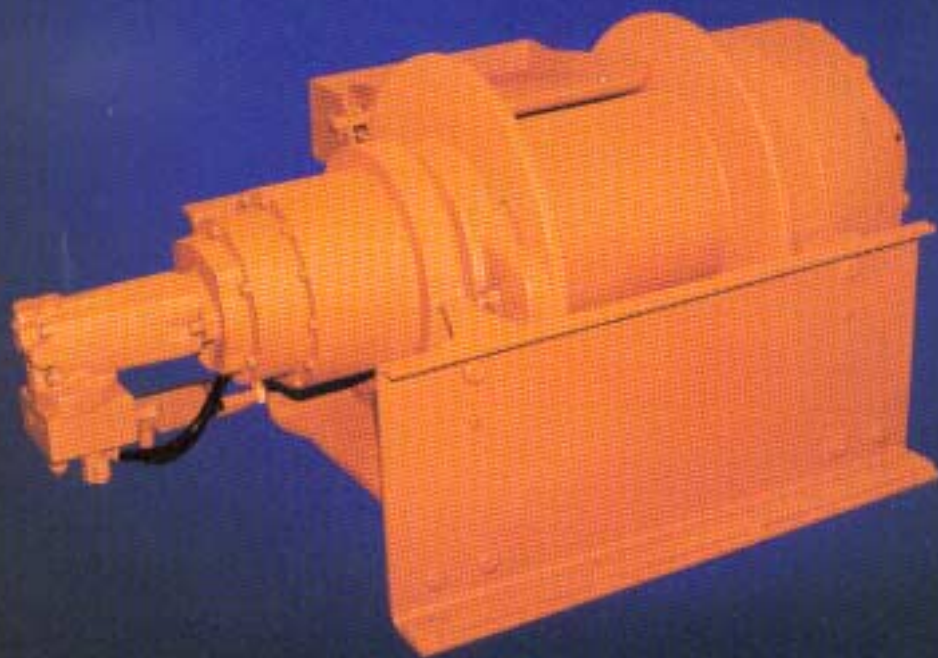


dp WINCH



Models 55-65-100 55,000-100,000 LB. **Dependable Performance/Compact Component Design**

STANDARD FEATURES:

- Highly Efficient Planetary Gearing
- Multi-Disc Wet Brake
 - Spring Applied/Hydraulic Release
 - Rated at Full Winch Load
- Hydraulic Brake Valve
 - Controlled Lowering of Load
- Durable Motors
 - Long Life
- Mounting Base
 - Versatile, Multi-Position
- Simple Component Design
 - Easy Service
- Right- and Left-Hand Drum Rotation
 - Easy Field Conversion
- Complies with SAE J706

OPTIONAL FEATURES:

- High-, Low-, or 2-Speed Hydraulic Motors
- Air/Hydraulic Free Spool
- Air-Operated Cable Tensioner
- Custom Mounting Bases
- Special Drum Configurations
- Grooved Drum (Model 55 Only)
- Transfer Gearbox
 - Reduces Overall Length

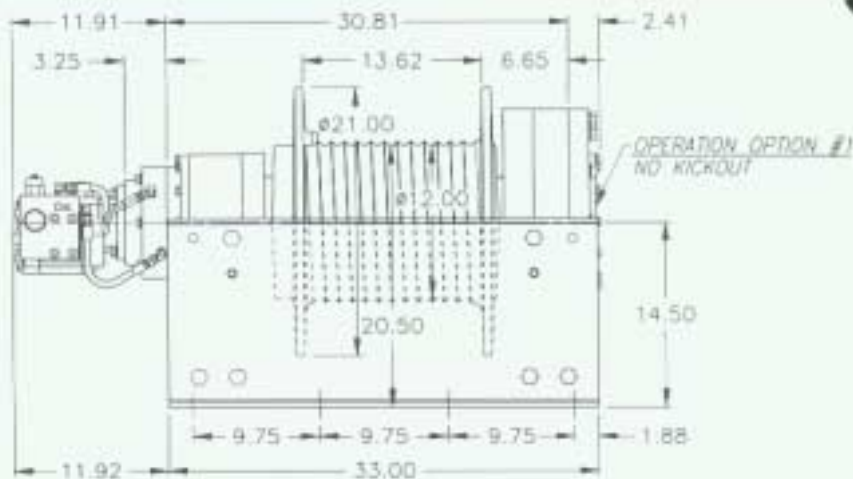
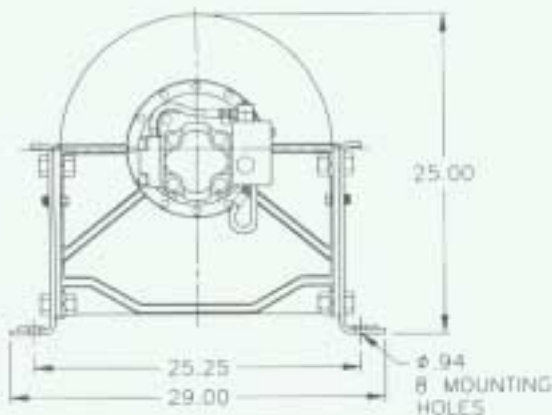
dp WINCH
Pull Ahead!



Models 55-65-100

55,000-100,000 LB.

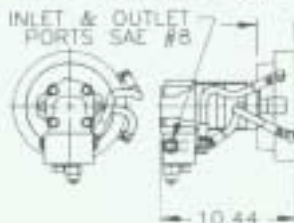
MODEL 55



DRUM CAPACITIES - FT

LAYER	7/8" WIRE ROPE	1" WIRE ROPE
1	47	42
2	101	90
3	161	144
4	227	*205
5	*300	-

MOTOR OPTION #2-LOW FLOW



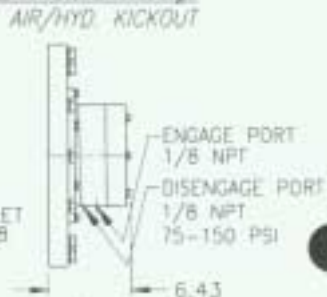
MOTOR OPTION #3 - 2 SPEED



2 SPD SOLENOID CARTRIDGE
NORMAL MODE-LOW SPEED/HIGH TORQUE
ENERGIZED MODE-12VDC-HIGH SPEED/LOW TORQUE

APPROXIMATE WEIGHT-1450 LBS.

OPERATION OPTION #4



NOTE: Drum capacities are in accordance with SAE J706. Actual capacities are usually up to 10% greater than those shown.
*Last layer capacity does not meet SAE J706.

WIRE ROPE DIA-IN	LAYER	LINE PULL LB.	LINE SPEED FPM				
			HIGH FLOW	LOW FLOW	SINGLE 2 SPEED / LOW	LOW FLOW-2 SPEED/HIGH	
7/8	1	55000	37	12	16	27500	24
	2	48400	42	14	18	24200	28
	3	43200	47	15	20	21600	31
	4	39100	51	17	22	19500	34
	5	35600	56	19	25	17800	38

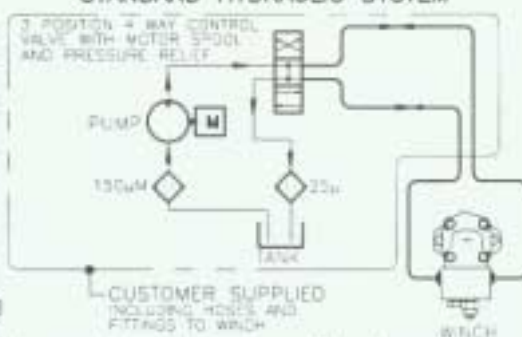
WIRE ROPE DIA-IN	LAYER	LINE PULL LB.	LINE SPEED FPM				
			HIGH FLOW	LOW FLOW	SINGLE 2 SPEED / LOW	LOW FLOW-2 SPEED/HIGH	
1	1	55000	37	12	16	27500	25
	2	47700	43	14	19	23800	28
	3	42100	48	16	21	21000	32
	4	37600	54	18	24	18800	36
	5	-	-	-	-	-	-

High Flow Motor performance is based on 60 GPM @ 2800 PSI.
Low Flow-2 Speed Motor performance is based on 20 GPM @ 2950 PSI.
Low Flow Motor performance is based on 25 GPM @ 3000 PSI.
Flows are maximum for each specific motor.

PERFORMANCE CHARTS



STANDARD HYDRAULIC SYSTEM



Because of continued product improvement, we reserve the right to make changes without notice.

CAUTION:

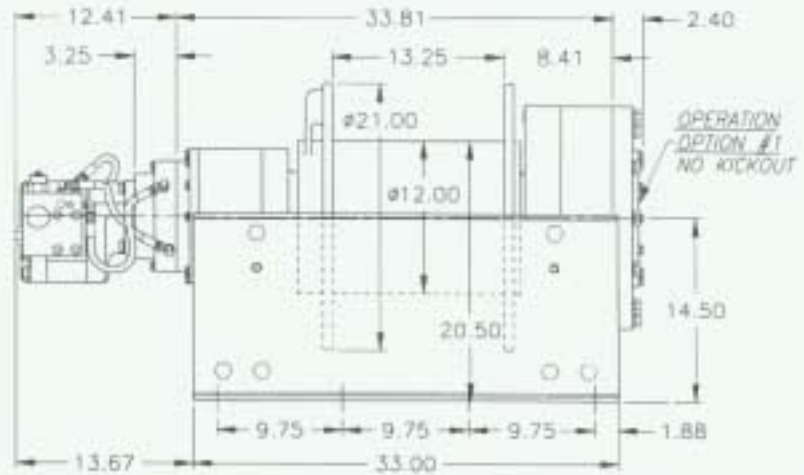
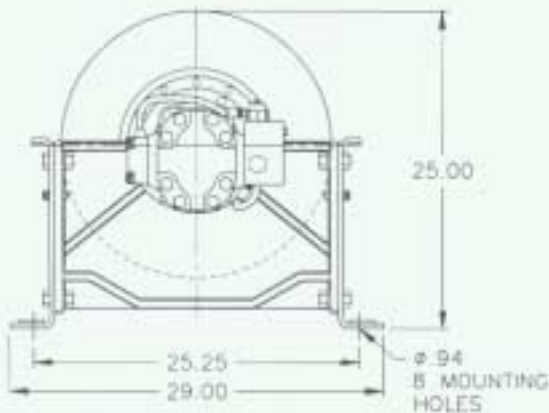
The last 5 wraps of cable must be left on the drum to assist the cable clamp in holding the load.

WARNING:

Winches are not intended to be used for the lifting or moving of persons.

PERFORMANCE DATA

MODEL 65



APPROXIMATE WEIGHT—1525 LBS.

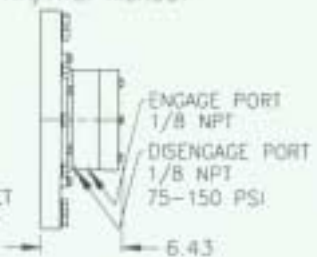
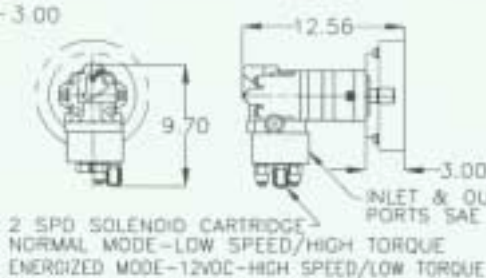
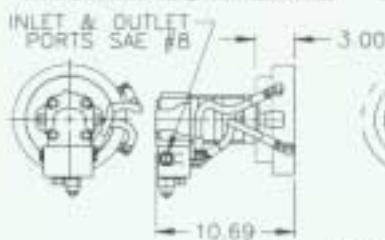
DRUM CAPACITIES - FT

LAYER	7/8" WIRE ROPE	1" WIRE ROPE
1	45	41
2	98	87
3	157	140
4	221	+200
5	* 292	-

MOTOR OPTION #2—LOW FLOW

MOTOR OPTION #3—2 SPEED

OPERATION OPTION #1
NO KICKOUT



2 SPD SOLENOID CARTRIDGE
NORMAL MODE—LOW SPEED/HIGH TORQUE
ENERGIZED MODE—12VDC—HIGH SPEED/LOW TORQUE

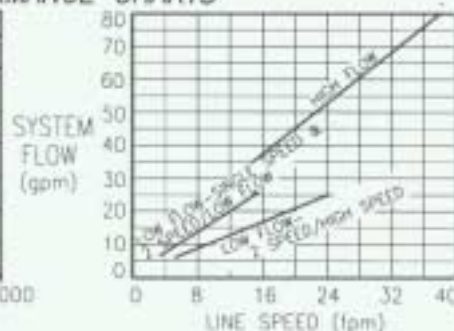
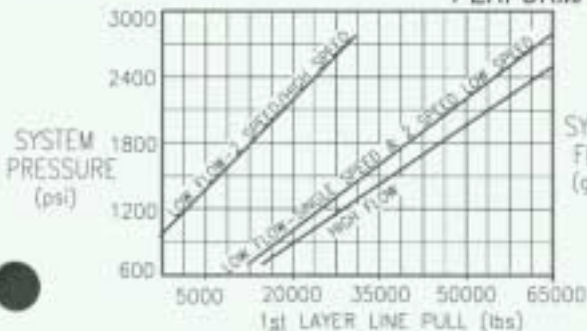
NOTE: Drum capacities are in accordance with SAE J706. Actual capacities are usually up to 10% greater than those shown.
*Last layer capacity does not meet SAE J706.

WIRE ROPE DIA.—IN	LAYER	LINE PULL LB.	LINE SPEED FPM			
			HIGH FLOW	LOW FLOW SINGLE SPEED & 2 SPEED/LOW	LOW FLOW—2 SPEED/HIGH	
					LINE PULL LB.	LINE SPEED
7/8	1	65000	38	12	31100	24
	2	57200	43	14	27400	27
	3	51100	48	16	24500	30
	4	46200	53	17	22100	34
	5	42100	58	19	20100	37

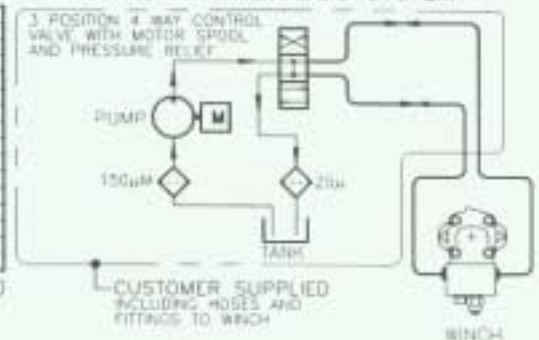
WIRE ROPE DIA.—IN	LAYER	LINE PULL LB.	LINE SPEED FPM			
			HIGH FLOW	LOW FLOW SINGLE SPEED & 2 SPEED/LOW	LOW FLOW—2 SPEED/HIGH	
					LINE PULL LB.	LINE SPEED
1	1	65000	38	13	31100	24
	2	56300	44	14	27000	28
	3	49700	50	16	23800	32
	4	44500	55	18	21300	35
	5	-	-	-	-	-

High Flow Motor performance is based on 60 GPM @ 2500PSI.
Low Flow—2 Speed Motor performance is based on 25 GPM @ 2850 PSI.
Low Flow Motor performance is based on 25 GPM @ 2800 PSI.
Flows are maximum for each specific motor.

PERFORMANCE CHARTS



STANDARD HYDRAULIC SYSTEM



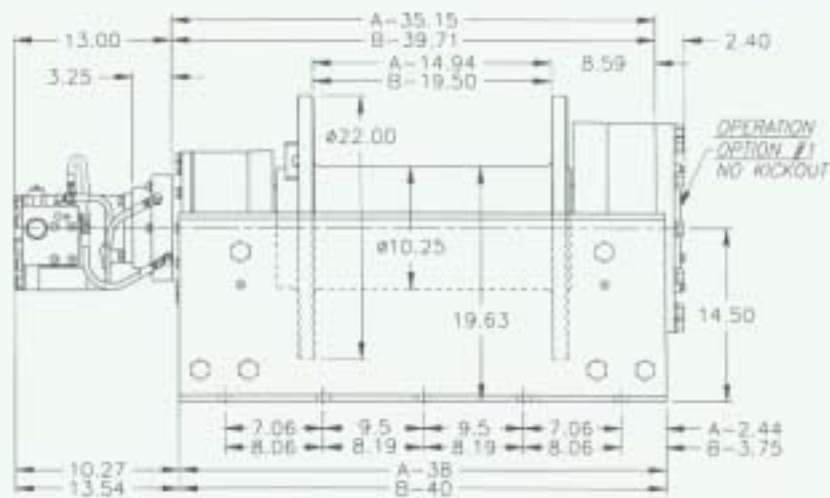
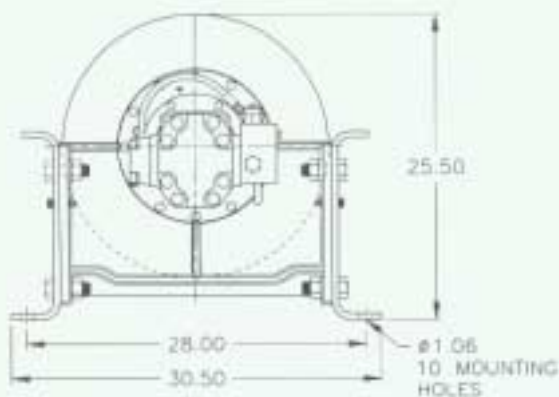
CUSTOMER SUPPLIED INCLUDING HOSES AND FITTINGS TO WINCH



Models 55-65-100

55,000-100,000 LB.

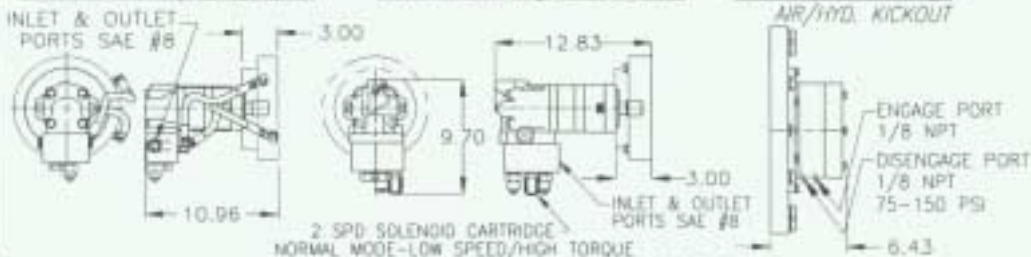
MODEL 100



DRUM CAPACITIES - FT

LAYER	1 1/8" WIRE ROPE		1 1/4" WIRE ROPE	
	A-DRUM	B-DRUM	A-DRUM	B-DRUM
1	36	46	32	42
2	78	102	72	94
3	128	167	118	154
4	185	241	*172	*224
5	*248	*324	-	-

OPTIONAL FEATURES



NOTE: Drum capacities are in accordance with SAE J706. Actual capacities are usually up to 10% greater than those shown.

*Last layer capacity does not meet SAE J706.

WIRE ROPE DIA-IN	LAYER	LINE PULL LB.	LINE SPEED FPM				
			HIGH FLOW	LOW FLOW		LOW FLOW-2 SPEED/HIGH	
				SINGLE SPEED	2 SPEED / LOW		LINE PULL LB.
1 1/8	1	100000	24	9	8	48800	16
	2	83500	28	11	9	40700	19
	3	71700	33	13	11	34900	22
	4	62800	38	15	13	30800	25
	5	55800	42	17	14	27200	29

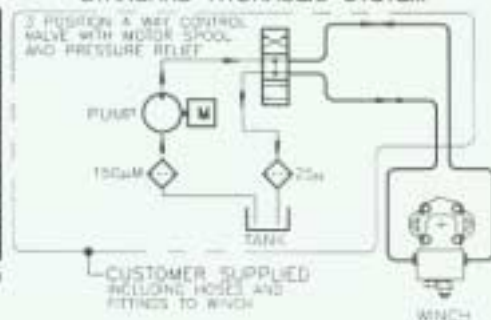
WIRE ROPE DIA-IN	LAYER	LINE PULL LB.	LINE SPEED FPM				
			HIGH FLOW	LOW FLOW		LOW FLOW-2 SPEED/HIGH	
				SINGLE SPEED	2 SPEED / LOW		LINE PULL LB.
1 1/4	1	100000	24	9	8	48200	16
	2	82100	29	12	10	39600	20
	3	69700	34	14	11	33600	23
	4	60500	40	16	13	29200	27
	5	-	-	-	-	-	-

High Flow Motor performance based on 80 GPM @ 2450 PSI.
 Low Flow - 2 Speed Motor performance based on 25 GPM @ 2800 PSI.
 Low Flow Motor performance based on 30 GPM @ 2850 PSI.
 Flows are maximum for each specific motor.

PERFORMANCE CHARTS



STANDARD HYDRAULIC SYSTEM



Distributor:



Pull Ahead!