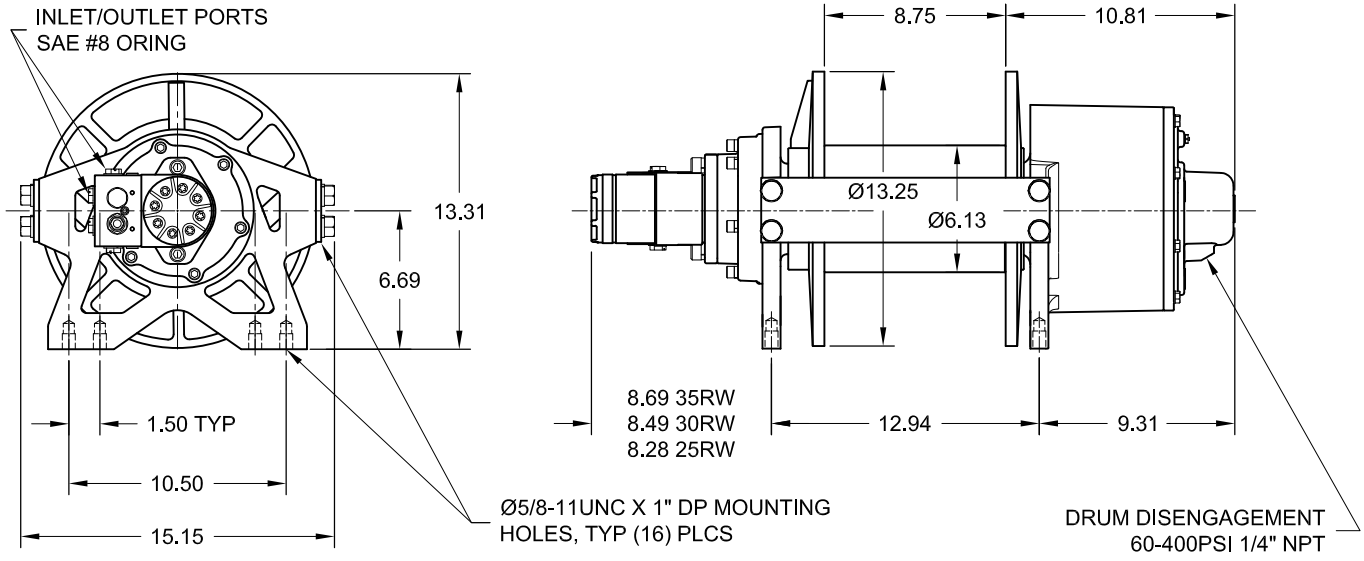




Model 25-30-35RW

25,000-30,000-35,000 lb.



APPROX. WEIGHT: 265 lb.

35RW - PERFORMANCE DATA

Layer	Drum Capacity ft	Line Pull lbs	Line Speed fpm
1	19	35000	8
2	42	28700	10
3	69	24400	12
4	100	21200	13

Performance is based on 10 gpm @ 2700 psi with a Ø3/4 wire rope.

30RW - PERFORMANCE DATA

Layer	Drum Capacity ft	Line Pull lbs	Line Speed fpm
1	22	30000	10
2	49	25300	12
3	79	21900	14
4	114	19300	16
5	153	17200	17

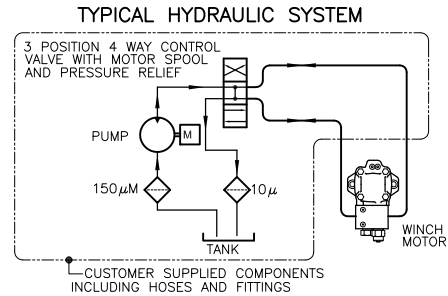
Performance is based on 10 gpm @ 2700 psi with a Ø5/8 wire rope.

25RW - PERFORMANCE DATA

Layer	Drum Capacity ft	Line Pull lbs	Line Speed fpm
1	25	25000	12
2	53	21400	14
3	86	18700	16
4	123	16600	18
5	164	14900	21
6	209	13600	23

Performance is based on 10 gpm @ 2800 psi with a Ø9/16 wire rope.

Cable capacities are in accordance with SAE J706. Actual cable capacities are usually up to 10% greater than those shown.



Contact your dp sales representative for additional options and features not shown.
The rated line pulls are for the winch only. Consult the rope manufacturer for rope ratings.

Because of continued product improvement, we reserve the right to make changes without notice.

WARNING	CAUTION
Winches are not intended to be used for the lifting or moving of persons.	The last 5 wraps cable must be left on the drum to assist the cable clamp in holding the load.

dp Winch is a part of the Tulsa Winch Group, a worldwide provider of winch systems and electronic load information systems.

P.O.Box 1130
Jenks, OK 74037-1130
Voice: 918-298-8300
Fax: 918-298-8301
www.dpwinch.com

