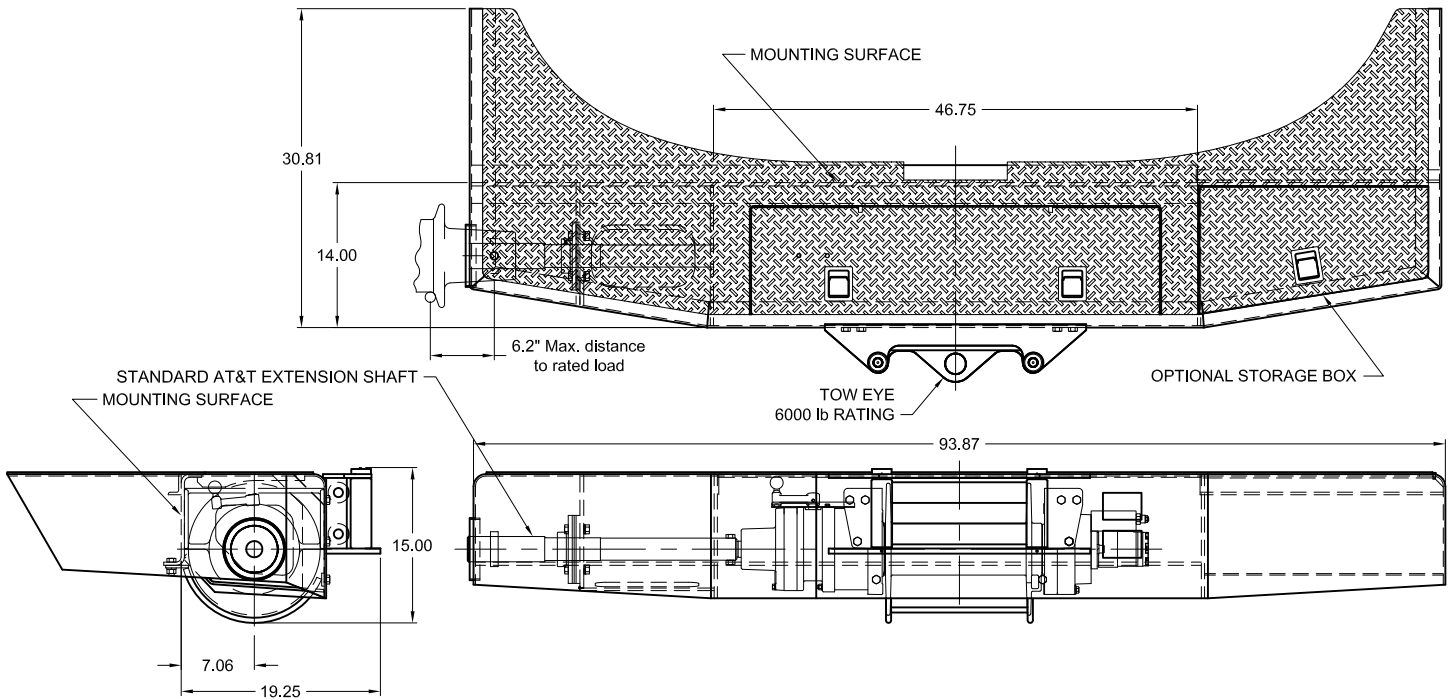




Model 20U Bumper

20,000 lb.



PERFORMANCE - MOTOR OPTION #2

Layer	Drum Capacity ft	Line Pull lbs	Line Speed fpm
1	33	20000	47
2	73	16900	56
3	119	14600	64
4	171	12800	73
5	230	11500	82
6	294*	10400	90

Performance is based on 30 gpm @ 2650 psi with a Ø9/16 wire rope.
Cable capacities are in accordance with SAE J706.

*Layer does not meet SAE J706.

Actual cable capacities are usually up to 10% greater than those shown.

PERFORMANCE - MOTOR OPTION #5

Layer	Line Pull lbs		Line Speed fpm	
	Low	High	Low	High
1	18	33	39	77
2	40	73	46	92
3	65	119	53	106
4	93	171	60	120
5	125	230	67	134
6	160*	294*	74	149

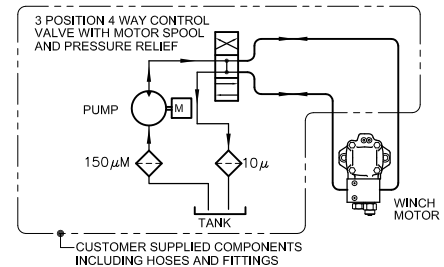
Performance is based on 25 gpm @ 2600 psi with a Ø9/16 wire rope.

EXTENSION SHAFT RATING MOTOR OPTION #2

Model	Output Shaft		7" Capstan	20" C.R.
	Torque in-lb	Speed rpm	Line Pull lb	Line Pull lb
20U	12000	116	3000	1200

Line Pull/Speed based on Ø1" nonmetallic rope.
See accessories page for additional load rating and location information with the capstan head.

TYPICAL HYDRAULIC SYSTEM



Contact your dp sales representative for additional options and features not shown.
The rated line pulls are for the capstan and winch only. Consult the rope manufacturer for rope ratings.

Because of continued product improvement, we reserve the right to make changes without notice.

WARNING	CAUTION
Winches are not intended to be used for the lifting or moving of persons.	The last 5 wraps cable must be left on the drum to assist the cable clamp in holding the load.

dp Winch is a part of the Tulsa Winch Group, a worldwide provider of winch systems and electronic load information systems.

P.O.Box 1130
Jenks, OK 74037-1130
Voice: 918-298-8300
Fax: 918-298-8301
www.dpwinch.com

