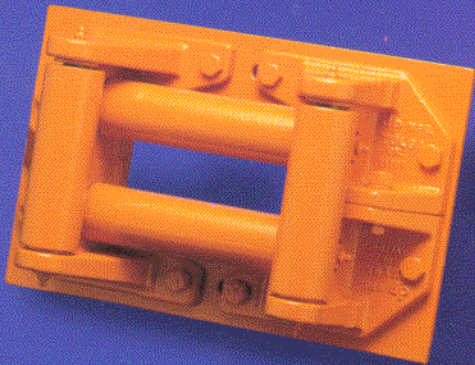




FAIRLEADS



Models 51608-51629

Dependable Performance/Compact Component Design

STANDARD FEATURES:

- Up to 45,000 lb. Capacity*
- Alloy Rollers with Bronze Bushings
 - Smooth Cable Guiding
- Grease Zerks
 - Trouble-Free Spooling
 - Long Life
- Ductile Iron Brackets**
 - Extra Strength
- Developed for Military Applications
 - Field Tested by U.S. Military
- Engineered for Heavy Duty Use

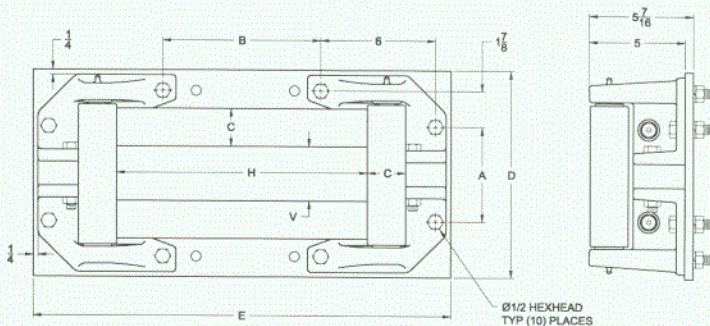
*Contact manufacturer for details

**Not Used for 12,000 lb. capacity or less

OPTIONAL FEATURES:

- Custom Designs for Special Applications are Possible





STANDARD

Maximum Ratings (lbs.)	Winch Drum Length (in.)*	A	B	C	D	E	H	V	Part Number
12000	9 1/2 - 10 3/8	N/A	N/A	1 1/2	5 5/16	13 1/8	9 5/8	1 5/8	51608**
20000	10 - 11 1/4	3 3/4	5 1/8	2	10	21 7/8	10	1 5/8	51615
20000	11 1/2 - 12 3/4	3 3/4	6 7/8	2	10	21 7/8	11 3/4	1 5/8	51617
20000	13 - 14 1/2	3 3/4	8 1/4	2	10	21 7/8	13 1/8	1 5/8	51619
30000	6 1/4 - 7 1/2	3 3/4	1 17/32	2	10	15 7/8	6 3/8	1 5/8	51611
30000	7 - 8 1/4	3 3/4	2 1/4	2	10	15 7/8	7 1/8	1 5/8	51613

EXTRA HEAVY DUTY

Maximum Ratings (lbs.)	Winch Drum Length (in.)*	A	B	C	D	E	H	V	Part Number
30000	6 1/4 - 7 1/2	5	1 17/32	2	11	15 7/8	6 3/8	2 7/8	51621
30000	7 - 8 1/4	5	2 1/4	2	11	15 7/8	7 1/8	2 7/8	51623
35000	10 - 11 1/2	5	5 1/8	2 1/2	11	23 1/8	9 1/2	2 3/8	51625
35000	11 1/2 - 13	5	6 7/8	2 1/2	11	23 1/8	11 1/4	2 3/8	51627
35000	14 1/2 - 16	5	9 1/2	2 1/2	11	23 1/8	13 7/8	2 3/8	51629

* Special lengths available.

Roller guides and brackets are available without mounting plates.

** Drawing does not accurately illustrate this model.

Because of continued product improvement, we reserve the right to make changes without notice.

Distributor:

dp Manufacturing, Inc.
5647 South 122nd East Ave.
Tulsa, OK 74146
(918) 250-2450
1-800-dp Winch
Fax: (918) 250-0630
www.dpwinch.com

